

Datasheet for ABIN655091
anti-CUZD1 antibody (C-Term)[Go to Product page](#)

3 Images

Overview

Quantity:	400 µL
Target:	CUZD1
Binding Specificity:	AA 579-607, C-Term
Reactivity:	Human
Host:	Rabbit
Clonality:	Polyclonal
Conjugate:	This CUZD1 antibody is un-conjugated
Application:	Western Blotting (WB), Immunofluorescence (IF), Immunohistochemistry (Paraffin-embedded Sections) (IHC (p))

Product Details

Immunogen:	This CUZD1 antibody is generated from rabbits immunized with a KLH conjugated synthetic peptide between 579-607 amino acids from the C-terminal region of human CUZD1.
Clone:	RB24983
Isotype:	Ig Fraction
Purification:	This antibody is purified through a protein A column, followed by peptide affinity purification.

Target Details

Target:	CUZD1
Alternative Name:	CUZD1 (CUZD1 Products)

Target Details

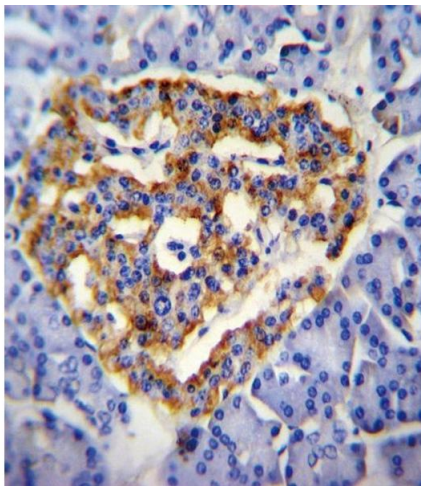
Background:	Potent and specific cellular inhibitor of CaM-kinase II (CAMK2). Traps Ca(2+)/calmodulin on CAMK2. May play an important role in the regulation of cell growth when overexpressed in colon adenocarcinoma LoVo cells. Traps Ca(2+)/calmodulin on CAMK2.
Molecular Weight:	68153
Gene ID:	50624
NCBI Accession:	NP_071317
UniProt:	Q86UP6

Application Details

Application Notes:	IF: 1:10~50. WB: 1:1000. IHC-P: 1:10~50
Restrictions:	For Research Use only

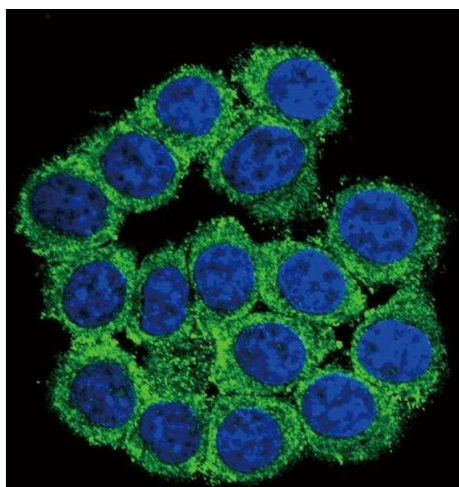
Handling

Format:	Liquid
Buffer:	Purified polyclonal antibody supplied in PBS with 0.09 % (W/V) sodium azide.
Preservative:	Sodium azide
Precaution of Use:	This product contains Sodium azide: a POISONOUS AND HAZARDOUS SUBSTANCE which should be handled by trained staff only.
Storage:	4 °C, -20 °C
Storage Comment:	Maintain refrigerated at 2-8 °C for up to 6 months. For long term storage store at -20 °C in small aliquots to prevent freeze-thaw cycles.
Expiry Date:	6 months



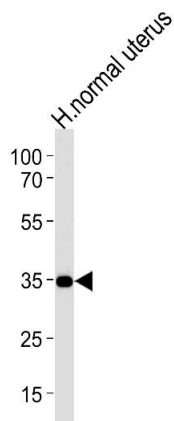
Immunohistochemistry (Paraffin-embedded Sections)

Image 1. CUZD1 Antibody (C-term) (ABIN655091 and ABIN2844724) immunohistochemistry analysis in formalin fixed and paraffin embedded human pancreas tissue followed by peroxidase conjugation of the secondary antibody and DAB staining. This data demonstrates the use of CUZD1 Antibody (C-term) for immunohistochemistry. Clinical relevance has not been evaluated.



Immunofluorescence

Image 2. Confocal immunofluorescent analysis of CUZD1 Antibody (C-term) (ABIN655091 and ABIN2844724) with 293 cell followed by Alexa Fluor 488-conjugated goat anti-rabbit IgG (green). DAPI was used to stain the cell nuclear (blue).



Western Blotting

Image 3. CUZD1 Antibody (C-term) (ABIN655091 and ABIN2844724) western blot analysis in human normal uterus tissue lysates (35 µg/lane). This demonstrates the CUZD1 antibody detected the CUZD1 protein (arrow).