

Datasheet for ABIN655102

anti-PLA2G2D antibody (C-Term)**3** Images[Go to Product page](#)

Overview

Quantity:	400 µL
Target:	PLA2G2D
Binding Specificity:	AA 105-131, C-Term
Reactivity:	Human
Host:	Rabbit
Clonality:	Polyclonal
Conjugate:	This PLA2G2D antibody is un-conjugated
Application:	Western Blotting (WB), Flow Cytometry (FACS), Immunohistochemistry (Paraffin-embedded Sections) (IHC (p))

Product Details

Immunogen:	This PLA2G2D antibody is generated from rabbits immunized with a KLH conjugated synthetic peptide between 105-131 amino acids from the C-terminal region of human PLA2G2D.
Clone:	RB28534
Isotype:	Ig Fraction
Purification:	This antibody is purified through a protein A column, followed by peptide affinity purification.

Target Details

Target:	PLA2G2D
Alternative Name:	PLA2G2D (PLA2G2D Products)

Target Details

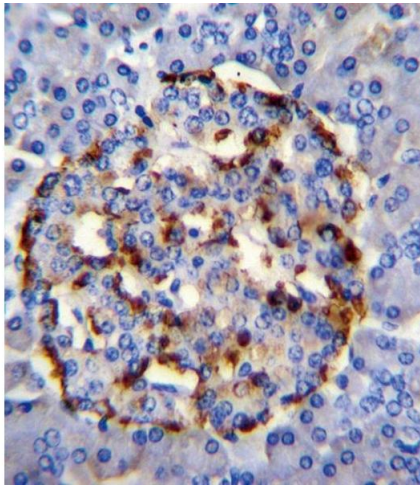
Background:	Transposase-derived protein that may have nuclease activity (Potential). Does not have transposase activity.
Molecular Weight:	16546
Gene ID:	26279
NCBI Accession:	NP_001258743 , NP_036532
UniProt:	Q9UNK4
Pathways:	Inositol Metabolic Process

Application Details

Application Notes:	WB: 1:1000. IHC-P: 1:10~50. FC: 1:10~50
Restrictions:	For Research Use only

Handling

Format:	Liquid
Buffer:	Purified polyclonal antibody supplied in PBS with 0.09 % (W/V) sodium azide.
Preservative:	Sodium azide
Precaution of Use:	This product contains Sodium azide: a POISONOUS AND HAZARDOUS SUBSTANCE which should be handled by trained staff only.
Storage:	4 °C, -20 °C
Storage Comment:	Maintain refrigerated at 2-8 °C for up to 6 months. For long term storage store at -20 °C in small aliquots to prevent freeze-thaw cycles.
Expiry Date:	6 months



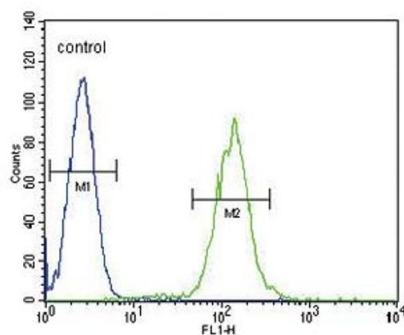
Immunohistochemistry (Paraffin-embedded Sections)

Image 1. PLA2G2D Antibody (C-term) (ABIN655102 and ABIN2844734) immunohistochemistry analysis in formalin fixed and paraffin embedded human pancreas tissue followed by peroxidase conjugation of the secondary antibody and DAB staining. This data demonstrates the use of PLA2G2D Antibody (C-term) for immunohistochemistry. Clinical relevance has not been evaluated.



Western Blotting

Image 2. PLA2G2D Antibody (C-term) (ABIN655102 and ABIN2844734) western blot analysis in HL-60 cell line lysates (35 µg/lane). This demonstrates the PLA2G2D antibody detected the PLA2G2D protein (arrow).



Flow Cytometry

Image 3. PLA2G2D Antibody (C-term) (ABIN655102 and ABIN2844734) flow cytometric analysis of HL-60 cells (right histogram) compared to a negative control cell (left histogram). FITC-conjugated goat-anti-rabbit secondary antibodies were used for the analysis.