

Datasheet for ABIN655105 anti-C12ORF29 antibody (N-Term)

5 Images



[Go to Product page](#)

Overview

Quantity:	400 µL
Target:	C12ORF29
Binding Specificity:	AA 61-89, N-Term
Reactivity:	Human, Mouse
Host:	Rabbit
Clonality:	Polyclonal
Conjugate:	This C12ORF29 antibody is un-conjugated
Application:	Western Blotting (WB), Flow Cytometry (FACS), Immunofluorescence (IF), Immunohistochemistry (Paraffin-embedded Sections) (IHC (p))

Product Details

Immunogen:	This CL029 antibody is generated from rabbits immunized with a KLH conjugated synthetic peptide between 61-89 amino acids from the N-terminal region of human CL029.
Clone:	RB28694
Isotype:	Ig Fraction
Purification:	This antibody is purified through a protein A column, followed by peptide affinity purification.

Target Details

Target:	C12ORF29
Alternative Name:	CL029 (C12ORF29 Products)

Target Details

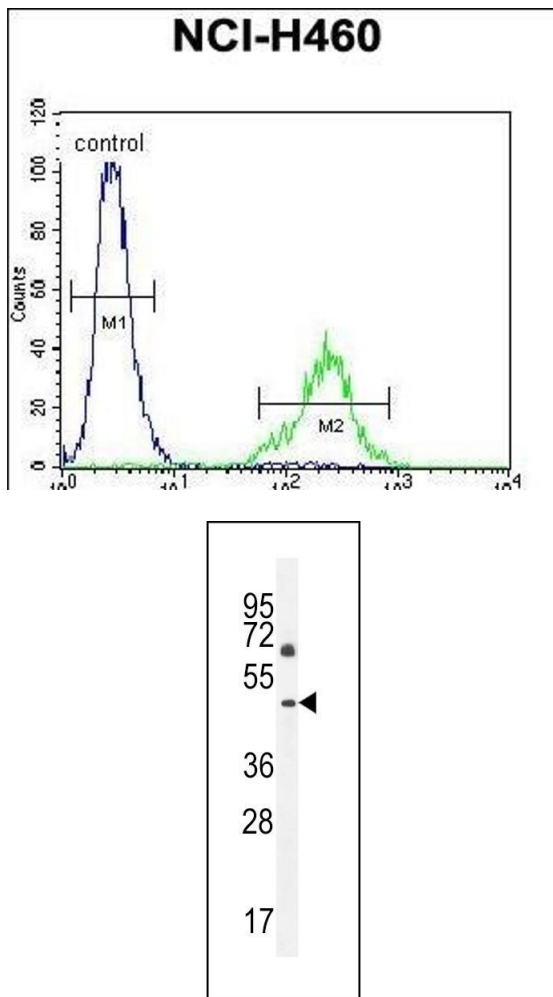
Background:	May be required for endoplasmic reticulum organization (By similarity).
Molecular Weight:	37490
Gene ID:	91298
NCBI Accession:	NP_001009894
UniProt:	Q8N999

Application Details

Application Notes:	IF: 1:10~50. WB: 1:1000. WB: 1:1000. IHC-P: 1:50~100. FC: 1:10~50
Restrictions:	For Research Use only

Handling

Format:	Liquid
Buffer:	Purified polyclonal antibody supplied in PBS with 0.09 % (W/V) sodium azide.
Preservative:	Sodium azide
Precaution of Use:	This product contains Sodium azide: a POISONOUS AND HAZARDOUS SUBSTANCE which should be handled by trained staff only.
Storage:	4 °C,-20 °C
Storage Comment:	Maintain refrigerated at 2-8 °C for up to 6 months. For long term storage store at -20 °C in small aliquots to prevent freeze-thaw cycles.
Expiry Date:	6 months

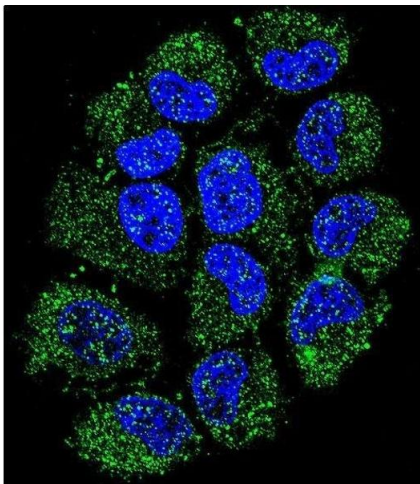


Flow Cytometry

Image 1. C Antibody (N-term) (ABIN655105 and ABIN2844737) flow cytometric analysis of NCI- cells (right histogram) compared to a negative control cell (left histogram). FITC-conjugated goat-anti-rabbit secondary antibodies were used for the analysis.

Western Blotting

Image 2. C Antibody (N-term) (ABIN655105 and ABIN2844737) western blot analysis in NCI- cell line lysates (35 µg/lane). This demonstrates the C antibody detected the C protein (arrow).



Immunofluorescence

Image 3. Confocal immunofluorescent analysis of C Antibody (N-term) (ABIN655105 and ABIN2844737) with NCI- cell followed by Alexa Fluor 488-conjugated goat anti-rabbit IgG (green). DI was used to stain the cell nuclear (blue).

Please check the [product details page](#) for more images. Overall 5 images are available for ABIN655105.