

Datasheet for ABIN655111
anti-MBD3L2 antibody (C-Term)[Go to Product page](#)

1 Image

Overview

Quantity:	400 µL
Target:	MBD3L2
Binding Specificity:	AA 176-204, C-Term
Reactivity:	Human
Host:	Rabbit
Clonality:	Polyclonal
Conjugate:	This MBD3L2 antibody is un-conjugated
Application:	Western Blotting (WB)

Product Details

Immunogen:	This MBD3L2 antibody is generated from rabbits immunized with a KLH conjugated synthetic peptide between 176-204 amino acids from the C-terminal region of human MBD3L2.
Clone:	RB28830
Isotype:	Ig Fraction
Purification:	This antibody is purified through a protein A column, followed by peptide affinity purification.

Target Details

Target:	MBD3L2
Alternative Name:	MBD3L2 (MBD3L2 Products)
Background:	This gene encodes a protein that is related to methyl-CpG-binding proteins but lacks the methyl-

Target Details

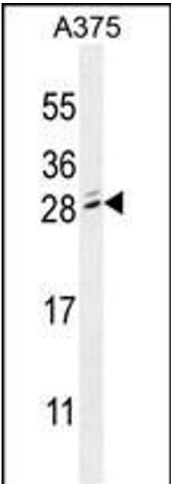
	CpG binding domain. The protein has been found in germ cell tumors and some somatic tissues.
Molecular Weight:	22994
Gene ID:	125997
NCBI Accession:	NP_653215
UniProt:	Q8NHZ7

Application Details

Application Notes:	WB: 1:1000
Restrictions:	For Research Use only

Handling

Format:	Liquid
Buffer:	Purified polyclonal antibody supplied in PBS with 0.09 % (W/V) sodium azide.
Preservative:	Sodium azide
Precaution of Use:	This product contains Sodium azide: a POISONOUS AND HAZARDOUS SUBSTANCE which should be handled by trained staff only.
Storage:	4 °C,-20 °C
Storage Comment:	Maintain refrigerated at 2-8 °C for up to 6 months. For long term storage store at -20 °C in small aliquots to prevent freeze-thaw cycles.
Expiry Date:	6 months



Western Blotting

Image 1. MBD3L2 Antibody (C-term) (ABIN655111 and ABIN2844742) western blot analysis in cell line lysates (35 µg/lane). This demonstrates the MBD3L2 antibody detected the MBD3L2 protein (arrow).