



[Go to Product page](#)

Datasheet for ABIN655112
anti-PMPCA antibody (C-Term)

2 Images

Overview

Quantity:	400 µL
Target:	PMPCA
Binding Specificity:	AA 454-483, C-Term
Reactivity:	Human
Host:	Rabbit
Clonality:	Polyclonal
Conjugate:	This PMPCA antibody is un-conjugated
Application:	Western Blotting (WB), Flow Cytometry (FACS)

Product Details

Immunogen:	This PMPCA antibody is generated from rabbits immunized with a KLH conjugated synthetic peptide between 454-483 amino acids from the C-terminal region of human PMPCA.
Clone:	RB28847
Isotype:	Ig Fraction
Purification:	This antibody is purified through a protein A column, followed by peptide affinity purification.

Target Details

Target:	PMPCA
Alternative Name:	PMPCA (PMPCA Products)
Molecular Weight:	58253

Target Details

Gene ID: 23203

NCBI Accession: [NP_055975](#)

UniProt: [Q10713](#)

Pathways: [Inositol Metabolic Process](#), [SARS-CoV-2 Protein Interactome](#)

Application Details

Application Notes: WB: 1:1000. FC: 1:10~50

Restrictions: For Research Use only

Handling

Format: Liquid

Buffer: Purified polyclonal antibody supplied in PBS with 0.09 % (W/V) sodium azide.

Preservative: Sodium azide

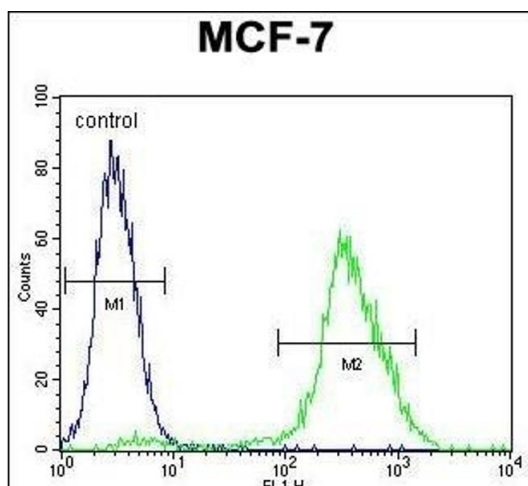
Precaution of Use: This product contains Sodium azide: a POISONOUS AND HAZARDOUS SUBSTANCE which should be handled by trained staff only.

Storage: 4 °C, -20 °C

Storage Comment: Maintain refrigerated at 2-8 °C for up to 6 months. For long term storage store at -20 °C in small aliquots to prevent freeze-thaw cycles.

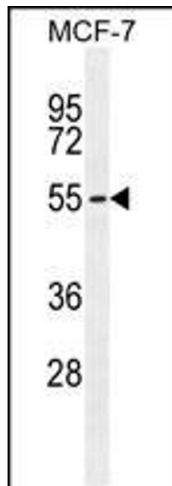
Expiry Date: 6 months

Images



Flow Cytometry

Image 1. PCA Antibody (C-term) (ABIN655112 and ABIN2844743) flow cytometric analysis of MCF-7 cells (right histogram) compared to a negative control cell (left histogram). FITC-conjugated goat-anti-rabbit secondary antibodies were used for the analysis.



Western Blotting

Image 2. PCA Antibody (C-term) (ABIN655112 and ABIN2844743) western blot analysis in MCF-7 cell line lysates (35 µg/lane). This demonstrates the PCA antibody detected the PCA protein (arrow).