

Datasheet for ABIN655113
anti-CPSF3L antibody (N-Term)

3 Images

[Go to Product page](#)

Overview

Quantity:	400 µL
Target:	CPSF3L
Binding Specificity:	AA 91-119, N-Term
Reactivity:	Human
Host:	Rabbit
Clonality:	Polyclonal
Conjugate:	This CPSF3L antibody is un-conjugated
Application:	Western Blotting (WB), Immunofluorescence (IF), Immunohistochemistry (Paraffin-embedded Sections) (IHC (p))

Product Details

Immunogen:	This CPSF3L antibody is generated from rabbits immunized with a KLH conjugated synthetic peptide between 91-119 amino acids from the N-terminal region of human CPSF3L.
Clone:	RB28848
Isotype:	Ig Fraction
Predicted Reactivity:	B, M, Rat
Purification:	This antibody is purified through a protein A column, followed by peptide affinity purification.

Target Details

Target:	CPSF3L
---------	--------

Target Details

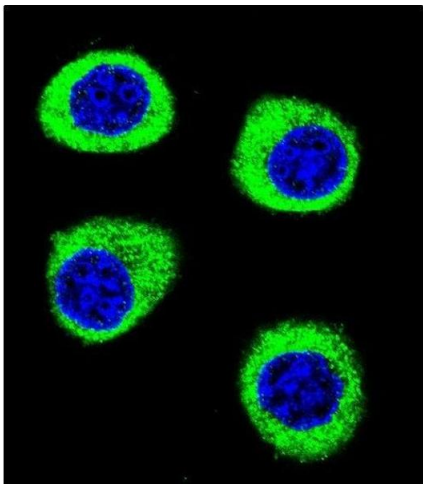
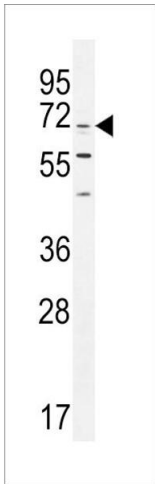
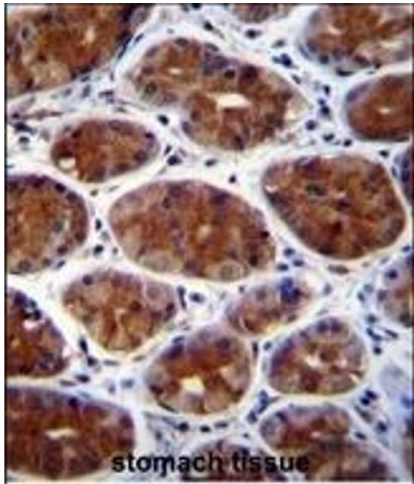
Alternative Name:	CPSF3L (CPSF3L Products)
Background:	The Integrator complex contains at least 12 subunits and associates with the C-terminal domain of RNA polymerase II large subunit (POLR2A, MIM 180660) and mediates the 3-prime end processing of small nuclear RNAs U1 (RNU1, MIM 180680) and U2 (RNU2, MIM 180690). INTS11, or CPSF3L, is the catalytic subunit of the Integrator complex (Baillat et al., 2005 [PubMed 16239144]).
Molecular Weight:	67663
Gene ID:	54973
NCBI Accession:	NP_001243385 , NP_001243389 , NP_001243391 , NP_001243392 , NP_060341
UniProt:	Q5TA45

Application Details

Application Notes:	IF: 1:10~50. WB: 1:1000. IHC-P: 1:10~50
Restrictions:	For Research Use only

Handling

Format:	Liquid
Buffer:	Purified polyclonal antibody supplied in PBS with 0.09 % (W/V) sodium azide.
Preservative:	Sodium azide
Precaution of Use:	This product contains Sodium azide: a POISONOUS AND HAZARDOUS SUBSTANCE which should be handled by trained staff only.
Storage:	4 °C, -20 °C
Storage Comment:	Maintain refrigerated at 2-8 °C for up to 6 months. For long term storage store at -20 °C in small aliquots to prevent freeze-thaw cycles.
Expiry Date:	6 months



Immunohistochemistry (Paraffin-embedded Sections)

Image 1. CPSF3L Antibody (N-term) (ABIN655113 and ABIN2844744) immunohistochemistry analysis in formalin fixed and paraffin embedded human stomach tissue followed by peroxidase conjugation of the secondary antibody and DAB staining. This data demonstrates the use of CPSF3L Antibody (N-term) for immunohistochemistry. Clinical relevance has not been evaluated.

Western Blotting

Image 2. CPSF3L Antibody (N-term) (ABIN655113 and ABIN2844744) western blot analysis in K562 cell line lysates (35 µg/lane). This demonstrates the CPSF3L antibody detected the CPSF3L protein (arrow).

Immunofluorescence

Image 3. Confocal immunofluorescent analysis of CPSF3L Antibody (N-term) (ABIN655113 and ABIN2844744) with U-251MG cell followed by Alexa Fluor 488-conjugated goat anti-rabbit IgG (green). DAPI was used to stain the cell nuclear (blue).