



[Go to Product page](#)

Datasheet for ABIN655120

## anti-KLRAQ1 antibody (AA 207-236)

### 2 Images

#### Overview

Quantity:	400 µL
Target:	KLRAQ1
Binding Specificity:	AA 207-236
Reactivity:	Human
Host:	Rabbit
Clonality:	Polyclonal
Conjugate:	This KLRAQ1 antibody is un-conjugated
Application:	Western Blotting (WB), Immunohistochemistry (Paraffin-embedded Sections) (IHC (p))

#### Product Details

Immunogen:	This KLRAQ1 antibody is generated from rabbits immunized with a KLH conjugated synthetic peptide between 207-236 amino acids from the Central region of human KLRAQ1.
Clone:	RB28943
Isotype:	Ig Fraction
Purification:	This antibody is purified through a protein A column, followed by peptide affinity purification.

#### Target Details

Target:	KLRAQ1
Alternative Name:	KLRAQ1 ( <a href="#">KLRAQ1 Products</a> )
Molecular Weight:	88314

## Target Details

Gene ID:	129285
NCBI Accession:	<a href="#">NP_001129101</a> , <a href="#">NP_001180404</a> , <a href="#">NP_694539</a>
UniProt:	<a href="#">Q6ZMI0</a>

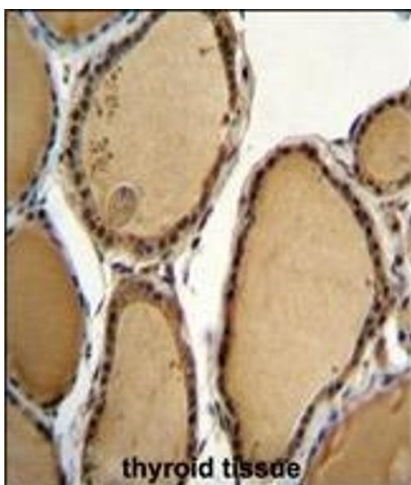
## Application Details

Application Notes:	WB: 1:1000. IHC-P: 1:50~100
Restrictions:	For Research Use only

## Handling

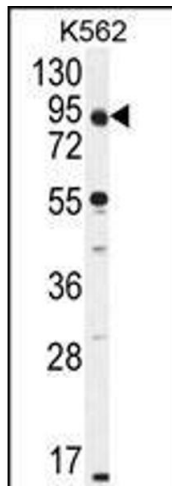
Format:	Liquid
Buffer:	Purified polyclonal antibody supplied in PBS with 0.09 % (W/V) sodium azide.
Preservative:	Sodium azide
Precaution of Use:	This product contains Sodium azide: a POISONOUS AND HAZARDOUS SUBSTANCE which should be handled by trained staff only.
Storage:	4 °C,-20 °C
Storage Comment:	Maintain refrigerated at 2-8 °C for up to 6 months. For long term storage store at -20 °C in small aliquots to prevent freeze-thaw cycles.
Expiry Date:	6 months

## Images



### Immunohistochemistry (Paraffin-embedded Sections)

**Image 1.** KLRAQ1 Antibody (Center) (ABIN655120 and ABIN2844751) immunohistochemistry analysis in formalin fixed and paraffin embedded human thyroid tissue followed by peroxidase conjugation of the secondary antibody and DAB staining. This data demonstrates the use of KLRAQ1 Antibody (Center) for immunohistochemistry. Clinical relevance has not been evaluated.



### Western Blotting

**Image 2.** KLRAQ1 Antibody (Center) (ABIN655120 and ABIN2844751) western blot analysis in K562 cell line lysates (35 µg/lane). This demonstrates the KLRAQ1 antibody detected the KLRAQ1 protein (arrow).