

Datasheet for ABIN655129
anti-KRTCAP2 antibody (C-Term)[Go to Product page](#)

3 Images

Overview

Quantity:	400 µL
Target:	KRTCAP2
Binding Specificity:	AA 134-162, C-Term
Reactivity:	Human, Mouse
Host:	Rabbit
Clonality:	Polyclonal
Conjugate:	This KRTCAP2 antibody is un-conjugated
Application:	Western Blotting (WB), Immunohistochemistry (Paraffin-embedded Sections) (IHC (p))

Product Details

Immunogen:	This KTAP2 antibody is generated from rabbits immunized with a KLH conjugated synthetic peptide between 134-162 amino acids from the C-terminal region of human KTAP2.
Clone:	RB28970
Isotype:	Ig Fraction
Predicted Reactivity:	Rat
Purification:	This antibody is purified through a protein A column, followed by peptide affinity purification.

Target Details

Target:	KRTCAP2
Alternative Name:	KTAP2 (KRTCAP2 Products)

Target Details

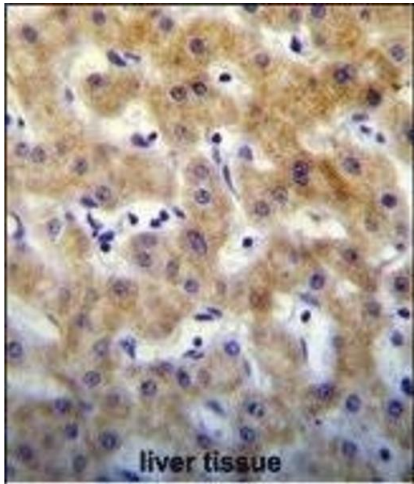
Background:	E3 ubiquitin-protein ligase which accepts ubiquitin from E2 ubiquitin-conjugating enzymes UBE2L3 and UBE2L6 in the form of a thioester and then directly transfers the ubiquitin to targeted substrates, such as UCKL1. Involved in the cytolytic activity of natural killer cells and cytotoxic T-cells.
Molecular Weight:	14679
Gene ID:	200185
NCBI Accession:	NP_776251
UniProt:	Q8N6L1

Application Details

Application Notes:	WB: 1:1000. WB: 1:1000. IHC-P: 1:10~50
Restrictions:	For Research Use only

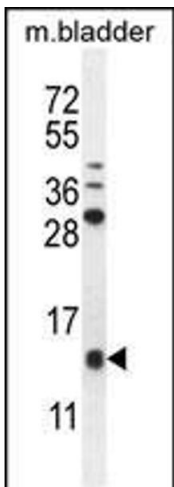
Handling

Format:	Liquid
Buffer:	Purified polyclonal antibody supplied in PBS with 0.09 % (W/V) sodium azide.
Preservative:	Sodium azide
Precaution of Use:	This product contains Sodium azide: a POISONOUS AND HAZARDOUS SUBSTANCE which should be handled by trained staff only.
Storage:	4 °C,-20 °C
Storage Comment:	Maintain refrigerated at 2-8 °C for up to 6 months. For long term storage store at -20 °C in small aliquots to prevent freeze-thaw cycles.
Expiry Date:	6 months



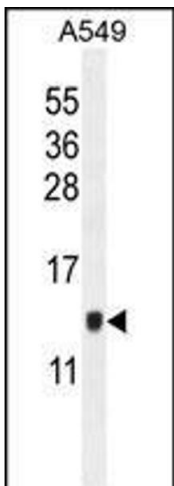
Immunohistochemistry (Paraffin-embedded Sections)

Image 1. KT Antibody (C-term) (ABIN655129 and ABIN2844756) immunohistochemistry analysis in formalin fixed and paraffin embedded human liver tissue followed by peroxidase conjugation of the secondary antibody and DAB staining. This data demonstrates the use of KT Antibody (C-term) for immunohistochemistry. Clinical relevance has not been evaluated.



Western Blotting

Image 2. KT Antibody (C-term) (ABIN655129 and ABIN2844756) western blot analysis in mouse bladder tissue lysates (35 µg/lane). This demonstrates the KT antibody detected the KT protein (arrow).



Western Blotting

Image 3. KT Antibody (C-term) (ABIN655129 and ABIN2844756) western blot analysis in A549 cell line lysates (35 µg/lane). This demonstrates the KT antibody detected the KT protein (arrow).