

Datasheet for ABIN655131

anti-Neurexophilin 4 antibody (C-Term)[Go to Product page](#)**2** Images

Overview

Quantity:	400 µL
Target:	Neurexophilin 4 (NXPH4)
Binding Specificity:	AA 219-248, C-Term
Reactivity:	Human
Host:	Rabbit
Clonality:	Polyclonal
Conjugate:	This Neurexophilin 4 antibody is un-conjugated
Application:	Western Blotting (WB), Flow Cytometry (FACS)

Product Details

Immunogen:	This NXPH4 antibody is generated from rabbits immunized with a KLH conjugated synthetic peptide between 219-248 amino acids from the C-terminal region of human NXPH4.
Clone:	RB28975
Isotype:	Ig Fraction
Predicted Reactivity:	Rat
Purification:	This antibody is purified through a protein A column, followed by peptide affinity purification.

Target Details

Target:	Neurexophilin 4 (NXPH4)
Alternative Name:	NXPH4 (NXPH4 Products)

Target Details

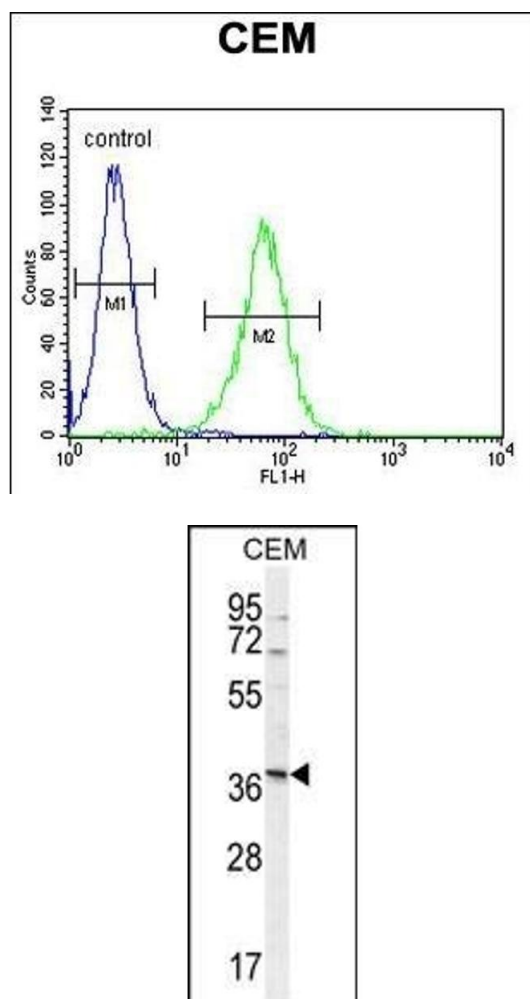
Background:	An adhesion molecule that interacts with extracellular matrix molecules in developing teeth and may play important roles in differentiation and maintenance of odontoblasts as well as in dentin formation (By similarity).
Molecular Weight:	33065
Gene ID:	11247
NCBI Accession:	NP_009155
UniProt:	O95158

Application Details

Application Notes:	WB: 1:1000. FC: 1:10~50
Restrictions:	For Research Use only

Handling

Format:	Liquid
Buffer:	Purified polyclonal antibody supplied in PBS with 0.09 % (W/V) sodium azide.
Preservative:	Sodium azide
Precaution of Use:	This product contains Sodium azide: a POISONOUS AND HAZARDOUS SUBSTANCE which should be handled by trained staff only.
Storage:	4 °C, -20 °C
Storage Comment:	Maintain refrigerated at 2-8 °C for up to 6 months. For long term storage store at -20 °C in small aliquots to prevent freeze-thaw cycles.
Expiry Date:	6 months



Flow Cytometry

Image 1. NXPH4 Antibody (C-term) (ABIN655131 and ABIN2844758) flow cytometric analysis of CEM cells (right histogram) compared to a negative control cell (left histogram). FITC-conjugated goat-anti-rabbit secondary antibodies were used for the analysis.

Western Blotting

Image 2. NXPH4 Antibody (C-term) (ABIN655131 and ABIN2844758) western blot analysis in CEM cell line lysates (35 μ g/lane). This demonstrates the NXPH4 antibody detected the NXPH4 protein (arrow).