



Datasheet for ABIN655144
anti-PPP1R37 antibody (N-Term)



[Go to Product page](#)

2 Images

Overview

Quantity:	400 µL
Target:	PPP1R37
Binding Specificity:	AA 36-64, N-Term
Reactivity:	Mouse
Host:	Rabbit
Clonality:	Polyclonal
Conjugate:	This PPP1R37 antibody is un-conjugated
Application:	Western Blotting (WB), Immunohistochemistry (Paraffin-embedded Sections) (IHC (p))

Product Details

Immunogen:	This LRRC68 antibody is generated from rabbits immunized with a KLH conjugated synthetic peptide between 36-64 amino acids from the N-terminal region of human LRRC68.
Clone:	RB30134
Isotype:	Ig Fraction
Predicted Reactivity:	B, Zf, Rat
Purification:	This antibody is purified through a protein A column, followed by peptide affinity purification.

Target Details

Target:	PPP1R37
Alternative Name:	LRRC68 (PPP1R37 Products)

Target Details

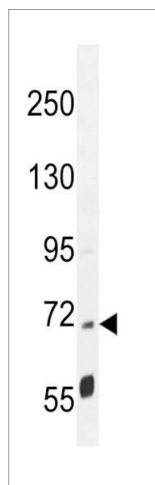
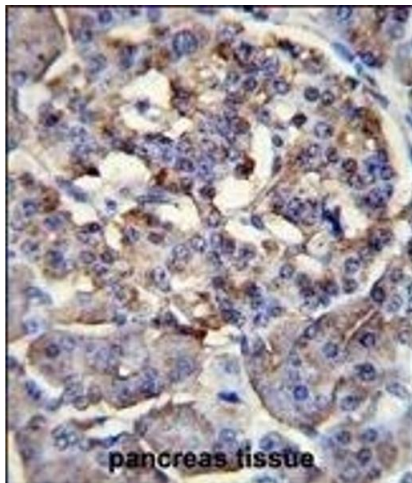
Background:	Guanine-nucleotide-releasing protein that acts on members of the SCE4/YPT1/RAB subfamily. Stimulates GDP release from both YPT1 and RAB3A, but is less active on these proteins than on the SEC4 protein. Might play a general role in vesicular transport.
Molecular Weight:	74767
NCBI Accession:	NP_061994
UniProt:	O75864

Application Details

Application Notes:	WB: 1:1000. IHC-P: 1:10~50
Restrictions:	For Research Use only

Handling

Format:	Liquid
Buffer:	Purified polyclonal antibody supplied in PBS with 0.09 % (W/V) sodium azide.
Preservative:	Sodium azide
Precaution of Use:	This product contains Sodium azide: a POISONOUS AND HAZARDOUS SUBSTANCE which should be handled by trained staff only.
Storage:	4 °C,-20 °C
Storage Comment:	Maintain refrigerated at 2-8 °C for up to 6 months. For long term storage store at -20 °C in small aliquots to prevent freeze-thaw cycles.
Expiry Date:	6 months



Immunohistochemistry (Paraffin-embedded Sections)

Image 1. LRRRC68 Antibody (N-term) (ABIN655144 and ABIN2844766) immunohistochemistry analysis in formalin fixed and paraffin embedded human pancreas tissue followed by peroxidase conjugation of the secondary antibody and DAB staining. This data demonstrates the use of LRRRC68 Antibody (N-term) for immunohistochemistry. Clinical relevance has not been evaluated.

Western Blotting

Image 2. LRRRC68 Antibody (N-term) (ABIN655144 and ABIN2844766) western blot analysis in mouse cerebellum tissue lysates (35 µg/lane). This demonstrates the LRRRC68 antibody detected the LRRRC68 protein (arrow).