

Datasheet for ABIN655149
anti-TIMP1 antibody (C-Term)

5 Images

[Go to Product page](#)

Overview

Quantity:	400 µL
Target:	TIMP1
Binding Specificity:	AA 157-188, C-Term
Reactivity:	Human
Host:	Rabbit
Clonality:	Polyclonal
Conjugate:	This TIMP1 antibody is un-conjugated
Application:	Western Blotting (WB), Immunohistochemistry (Paraffin-embedded Sections) (IHC (p)), Immunofluorescence (IF), Flow Cytometry (FACS)

Product Details

Immunogen:	This TIMP1 antibody is generated from rabbits immunized with a KLH conjugated synthetic peptide between 157-188 amino acids from the C-terminal region of human TIMP1.
Clone:	RB14602
Isotype:	Ig Fraction
Purification:	This antibody is prepared by Saturated Ammonium Sulfate (SAS) precipitation followed by dialysis against PBS.

Target Details

Target:	TIMP1
Alternative Name:	TIMP1 (TIMP1 Products)

Target Details

Background: This gene belongs to the TIMP gene family. The proteins encoded by this gene family are natural inhibitors of the matrix metalloproteinases (MMPs), a group of peptidases involved in degradation of the extracellular matrix. In addition to its inhibitory role against most of the known MMPs, the encoded protein is able to promote cell proliferation in a wide range of cell types, and may also have an anti-apoptotic function. Transcription of this gene is highly inducible in response to many cytokines and hormones. In addition, the expression from some but not all inactive X chromosomes suggests that this gene inactivation is polymorphic in human females. This gene is located within intron 6 of the synapsin I gene and is transcribed in the opposite direction.

Molecular Weight: 23171

Gene ID: 7076

NCBI Accession: [NP_003245](#)

UniProt: [P01033](#)

Application Details

Application Notes: IF: 1:10~50. IF: 1:10~50. WB: 1:1000. IHC-P: 1:50~100. FC: 1:10~50

Restrictions: For Research Use only

Handling

Format: Liquid

Buffer: Purified polyclonal antibody supplied in PBS with 0.09 % (W/V) sodium azide.

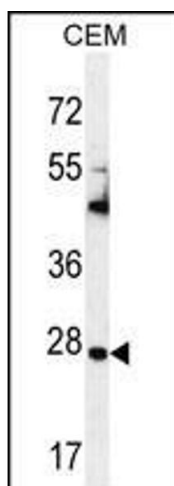
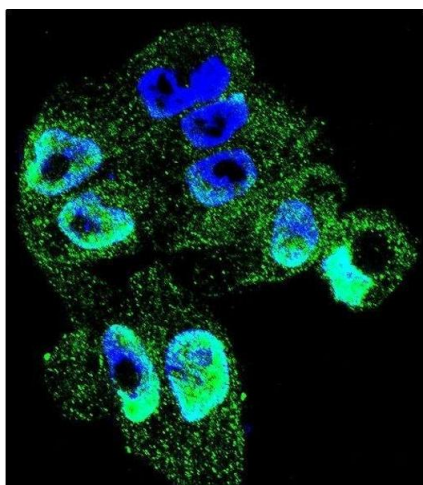
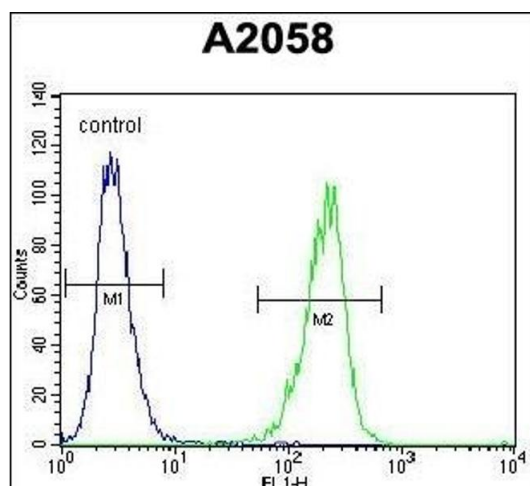
Preservative: Sodium azide

Precaution of Use: This product contains Sodium azide: a POISONOUS AND HAZARDOUS SUBSTANCE which should be handled by trained staff only.

Storage: 4 °C, -20 °C

Storage Comment: Maintain refrigerated at 2-8 °C for up to 6 months. For long term storage store at -20 °C in small aliquots to prevent freeze-thaw cycles.

Expiry Date: 6 months



Flow Cytometry

Image 1. TI Antibody (C-term) (ABIN655149 and ABIN2844770) flow cytometric analysis of cells (right histogram) compared to a negative control cell (left histogram). FITC-conjugated goat-anti-rabbit secondary antibodies were used for the analysis.

Immunofluorescence

Image 2. Confocal immunofluorescent analysis of TI Antibody (C-term) (ABIN655149 and ABIN2844770) with cell followed by Alexa Fluor 488-conjugated goat anti-rabbit IgG (green). DI was used to stain the cell nuclear (blue).

Western Blotting

Image 3. TI Antibody (C-term) (ABIN655149 and ABIN2844770) western blot analysis in CEM cell line lysates (35 µg/lane). This demonstrates the TI antibody detected the TI protein (arrow).

Please check the [product details page](#) for more images. Overall 5 images are available for ABIN655149.