

Datasheet for ABIN655156  
**anti-LIN28A antibody (AA 108-138)**

## 6 Images

[Go to Product page](#)

## Overview

Quantity:	400 µL
Target:	LIN28A
Binding Specificity:	AA 108-138
Reactivity:	Human, Mouse
Host:	Rabbit
Clonality:	Polyclonal
Conjugate:	This LIN28A antibody is un-conjugated
Application:	Western Blotting (WB), Immunofluorescence (IF), Flow Cytometry (FACS), Immunohistochemistry (Paraffin-embedded Sections) (IHC (p))

## Product Details

Immunogen:	This LIN28A antibody is generated from rabbits immunized with a KLH conjugated synthetic peptide between 108-138 amino acids from the Central region of human LIN28A.
Clone:	RB14827
Isotype:	Ig Fraction
Purification:	This antibody is prepared by Saturated Ammonium Sulfate (SAS) precipitation followed by dialysis against PBS.

## Target Details

Target:	LIN28A
Alternative Name:	LIN28A ( <a href="#">LIN28A Products</a> )

## Target Details

**Background:** Acts as a 'translational enhancer', driving specific mRNAs to polysomes and thus increasing the efficiency of protein synthesis. Its association with the translational machinery and target mRNAs results in an increased number of initiation events per molecule of mRNA and, indirectly, in stabilizing the mRNAs. Binds IGF2 mRNA, MYOD1 mRNA, ARBP/36B4 ribosomal protein mRNA and its own mRNA. Essential for skeletal muscle differentiation program through the translational up-regulation of IGF2 expression (By similarity). Acts as a suppressor of microRNA (miRNA) biogenesis by specifically binding the precursor let-7 (pre-let-7), a miRNA precursor. Acts by binding pre-let-7 and recruiting ZCCHC11/TUT4 uridylyltransferase, leading to the terminal uridylation of pre-let-7. Uridylated pre-let-7 miRNAs fail to be processed by Dicer and undergo degradation. Degradation of pre-let-7 in embryonic stem (ES) cells contributes to the maintenance of ES cells. In contrast, LIN28A down-regulation in neural stem cells by miR-125, allows the processing of pre-let-7. Specifically recognizes the 5'-GGAG-3' motif in the terminal loop of pre-let-7. Also recognizes and binds non pre-let-7 pre-miRNAs that contain the 5'-GGAG-3' motif in the terminal loop, leading to their terminal uridylation and subsequent degradation.

**Molecular Weight:** 22743

**Gene ID:** 79727

**NCBI Accession:** [NP\\_078950](#)

**UniProt:** [Q9H9Z2](#)

**Pathways:** [Stem Cell Maintenance](#)

## Application Details

**Application Notes:** IF: 1:10~50. IF: 1:100. WB: 1:1000. WB: 1:4000. IHC-P: 1:50~100. FC: 1:10~50

**Restrictions:** For Research Use only

## Handling

**Format:** Liquid

**Buffer:** Purified polyclonal antibody supplied in PBS with 0.09 % (W/V) sodium azide.

**Preservative:** Sodium azide

**Precaution of Use:** This product contains Sodium azide: a POISONOUS AND HAZARDOUS SUBSTANCE which should be handled by trained staff only.

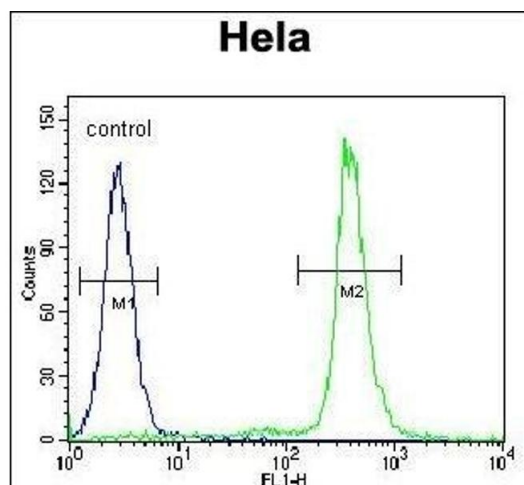
## Handling

Storage: 4 °C, -20 °C

Storage Comment: Maintain refrigerated at 2-8 °C for up to 6 months. For long term storage store at -20 °C in small aliquots to prevent freeze-thaw cycles.

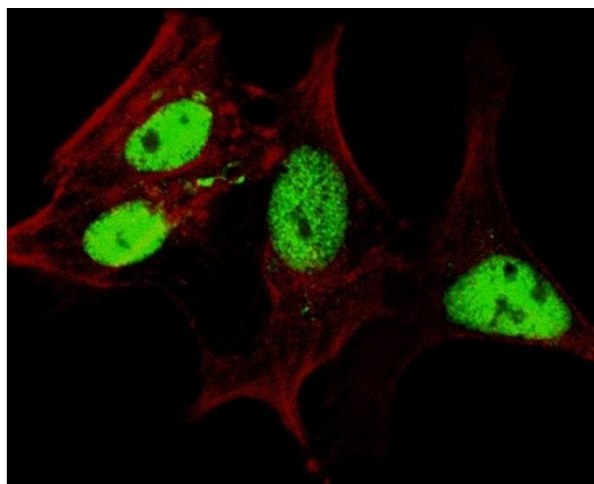
Expiry Date: 6 months

## Images



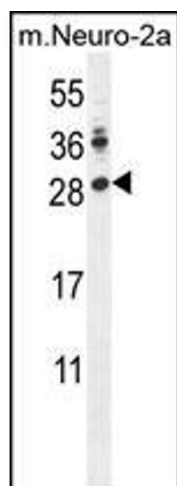
### Flow Cytometry

**Image 1.** LIN28A Antibody (Center) (ABIN655156 and ABIN2844774) flow cytometric analysis of HeLa cells (right histogram) compared to a negative control cell (left histogram). FITC-conjugated goat-anti-rabbit secondary antibodies were used for the analysis.



### Immunofluorescence

**Image 2.** Fluorescent confocal image of SY5Y cells stained with (ABIN655156 and ABIN2844774) LIN28A (Center) antibody. SY5Y cells were fixed with 4 % PFA (20 min), permeabilized with Triton X-100 (0.2 %, 30 min), then incubated with (ABIN655156 and ABIN2844774) LIN28A (Center) primary antibody (1:200, 2 h at room temperature). For secondary antibody, Alexa Fluor® 488 conjugated donkey anti-rabbit antibody (green) was used (1:1000, 1h). Cytoplasmic actin was counterstained with Alexa Fluor® 555 (red) conjugated Phalloidin (5.25 µM, 25 min). Lin28a immunoreactivity is localized very specifically to the nuclei of the SY5Y cells.



#### Western Blotting

**Image 3.** LIN28A Antibody (Center) (ABIN655156 and ABIN2844774) western blot analysis in mouse Neuro-2a cell line lysates (35 µg/lane). This demonstrates the LIN28A antibody detected the LIN28A protein (arrow).

Please check the [product details page](#) for more images. Overall 6 images are available for ABIN655156.