

Datasheet for ABIN655157  
**anti-LARS antibody (N-Term)**

## 2 Images

[Go to Product page](#)

## Overview

Quantity:	400 µL
Target:	LARS
Binding Specificity:	AA 176-205, N-Term
Reactivity:	Mouse
Host:	Rabbit
Clonality:	Polyclonal
Conjugate:	This LARS antibody is un-conjugated
Application:	Western Blotting (WB), Flow Cytometry (FACS)

## Product Details

Immunogen:	This LARS antibody is generated from rabbits immunized with a KLH conjugated synthetic peptide between 176-205 amino acids from the N-terminal region of human LARS.
Clone:	RB14919
Isotype:	Ig Fraction
Purification:	This antibody is prepared by Saturated Ammonium Sulfate (SAS) precipitation followed by dialysis against PBS.

## Target Details

Target:	LARS
Alternative Name:	LARS ( <a href="#">LARS Products</a> )

## Target Details

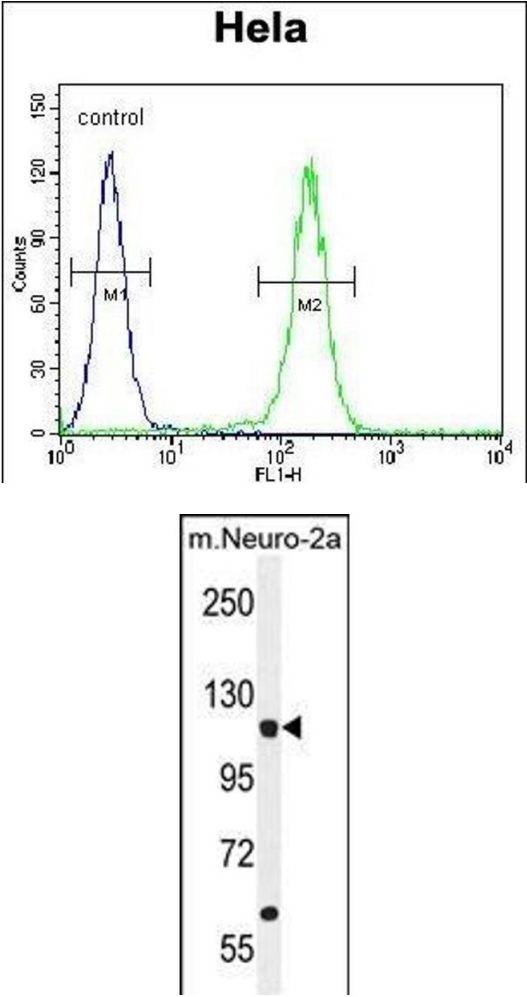
Background:	This gene encodes a cytosolic leucine-tRNA synthetase, a member of the class I aminoacyl-tRNA synthetase family. The encoded enzyme catalyzes the ATP-dependent ligation of L-leucine to tRNA(Leu). It is found in the cytoplasm as part of a multisynthetase complex and interacts with the arginine tRNA synthetase through its C-terminal domain. Alternatively spliced transcript variants of this gene have been found, however, their full-length nature is not known.
Molecular Weight:	134466
Gene ID:	51520
NCBI Accession:	<a href="#">NP_064502</a>
UniProt:	<a href="#">Q9P2J5</a>
Pathways:	<a href="#">EGFR Signaling Pathway</a>

## Application Details

Application Notes:	WB: 1:1000. FC: 1:10~50
Restrictions:	For Research Use only

## Handling

Format:	Liquid
Buffer:	Purified polyclonal antibody supplied in PBS with 0.09 % (W/V) sodium azide.
Preservative:	Sodium azide
Precaution of Use:	This product contains Sodium azide: a POISONOUS AND HAZARDOUS SUBSTANCE which should be handled by trained staff only.
Storage:	4 °C, -20 °C
Storage Comment:	Maintain refrigerated at 2-8 °C for up to 6 months. For long term storage store at -20 °C in small aliquots to prevent freeze-thaw cycles.
Expiry Date:	6 months



Flow Cytometry

**Image 1.** LARS Antibody (N-term) (ABIN655157 and ABIN2844775) flow cytometric analysis of Hela cells (right histogram) compared to a negative control cell (left histogram).FITC-conjugated goat-anti-rabbit secondary antibodies were used for the analysis.

Western Blotting

**Image 2.** LARS Antibody (N-term) (ABIN655157 and ABIN2844775) western blot analysis in mouse Neuro-2a cell line lysates (35 µg/lane).This demonstrates the LARS antibody detected the LARS protein (arrow).