

Datasheet for ABIN655158  
**anti-Cyclin C antibody (N-Term)**



[Go to Product page](#)

2 Images

### Overview

Quantity:	400 µL
Target:	Cyclin C (CCNC)
Binding Specificity:	AA 1-30, N-Term
Reactivity:	Human
Host:	Rabbit
Clonality:	Polyclonal
Conjugate:	This Cyclin C antibody is un-conjugated
Application:	Western Blotting (WB), Flow Cytometry (FACS)

### Product Details

Immunogen:	This CCNC antibody is generated from rabbits immunized with a KLH conjugated synthetic peptide between 1-30 amino acids from the N-terminal region of human CCNC.
Clone:	RB14994
Isotype:	Ig Fraction
Purification:	This antibody is prepared by Saturated Ammonium Sulfate (SAS) precipitation followed by dialysis against PBS.

### Target Details

Target:	Cyclin C (CCNC)
Alternative Name:	CCNC ( <a href="#">CCNC Products</a> )

## Target Details

---

Background:	The protein encoded by this gene is a member of the cyclin family of proteins. The encoded protein interacts with cyclin-dependent kinase 8 and induces the phosphorylation of the carboxy-terminal domain of the large subunit of RNA polymerase II. The level of mRNAs for this gene peaks in the G1 phase of the cell cycle. Two transcript variants encoding different isoforms have been found for this gene.
Molecular Weight:	33243
Gene ID:	892
NCBI Accession:	<a href="#">NP_001013417</a> , <a href="#">NP_005181</a>
UniProt:	<a href="#">P24863</a>
Pathways:	<a href="#">Cell Division Cycle</a> , <a href="#">Regulation of Lipid Metabolism by PPARalpha</a>

## Application Details

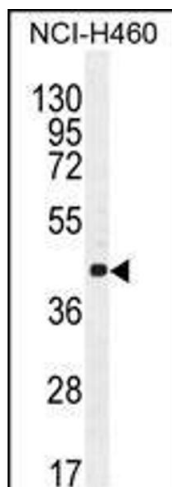
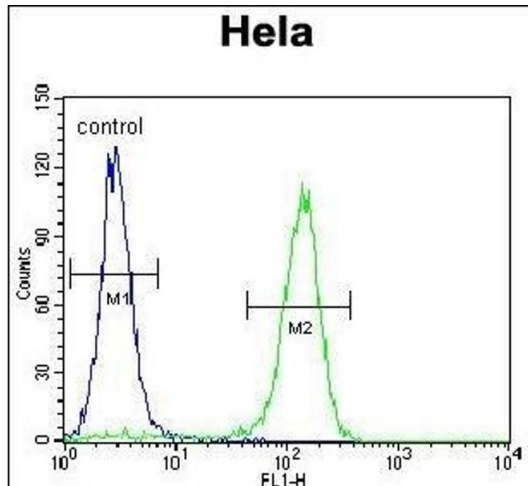
---

Application Notes:	WB: 1:1000. FC: 1:10~50
Restrictions:	For Research Use only

## Handling

---

Format:	Liquid
Buffer:	Purified polyclonal antibody supplied in PBS with 0.09 % (W/V) sodium azide.
Preservative:	Sodium azide
Precaution of Use:	This product contains Sodium azide: a POISONOUS AND HAZARDOUS SUBSTANCE which should be handled by trained staff only.
Storage:	4 °C, -20 °C
Storage Comment:	Maintain refrigerated at 2-8 °C for up to 6 months. For long term storage store at -20 °C in small aliquots to prevent freeze-thaw cycles.
Expiry Date:	6 months



### Flow Cytometry

**Image 1.** CCNC Antibody (N-term) (ABIN655158 and ABIN2844776) flow cytometric analysis of HeLa cells (right histogram) compared to a negative control cell (left histogram). FITC-conjugated goat-anti-rabbit secondary antibodies were used for the analysis.

### Western Blotting

**Image 2.** CCNC Antibody (N-term) (ABIN655158 and ABIN2844776) western blot analysis in NCI- cell line lysates (35 µg/lane). This demonstrates the CCNC antibody detected the CCNC protein (arrow).