

Datasheet for ABIN655166
anti-FBXW11 antibody (AA 168-196)

3 Images

[Go to Product page](#)

Overview

Quantity:	400 µL
Target:	FBXW11
Binding Specificity:	AA 168-196
Reactivity:	Human
Host:	Rabbit
Clonality:	Polyclonal
Conjugate:	This FBXW11 antibody is un-conjugated
Application:	Western Blotting (WB), Flow Cytometry (FACS), Immunohistochemistry (Paraffin-embedded Sections) (IHC (p))

Product Details

Immunogen:	This FBXW11 antibody is generated from rabbits immunized with a KLH conjugated synthetic peptide between 168-196 amino acids from the Central region of human FBXW11.
Clone:	RB18056
Isotype:	Ig Fraction
Predicted Reactivity:	M
Purification:	This antibody is purified through a protein A column, followed by peptide affinity purification.

Target Details

Target:	FBXW11
---------	--------

Target Details

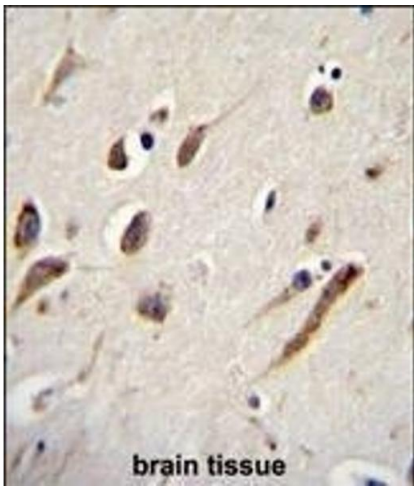
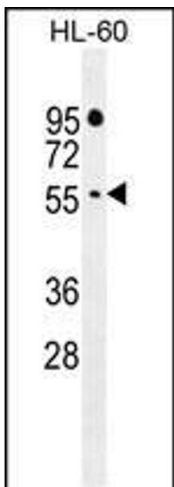
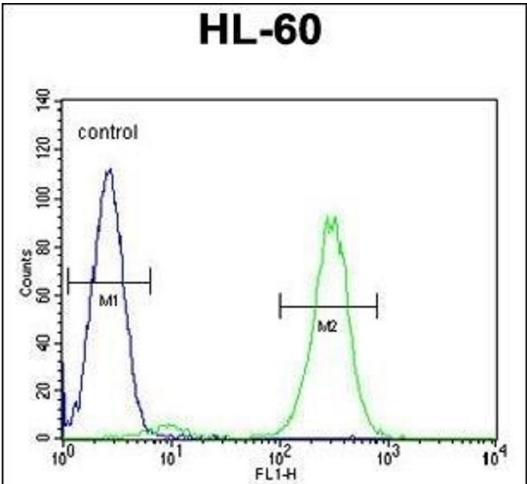
Alternative Name:	FBXW11 (FBXW11 Products)
Background:	This gene encodes a member of the F-box protein family which is characterized by an approximately 40 amino acid motif, the F-box. The F-box proteins constitute one of the four subunits of ubiquitin protein ligase complex called SCFs (SKP1-cullin-F-box), which function in phosphorylation-dependent ubiquitination. The F-box proteins are divided into 3 classes: Fbws containing WD-40 domains, Fbls containing leucine-rich repeats, and Fbxs containing either different protein-protein interaction modules or no recognizable motifs. The protein encoded by this gene belongs to the Fbws class and, in addition to an F-box, contains multiple WD40 repeats. This gene contains at least 14 exons, and its alternative splicing generates 3 transcript variants diverging at the presence/absence of two alternate exons.
Molecular Weight:	62091
Gene ID:	23291
NCBI Accession:	NP_036432 , NP_387448 , NP_387449
UniProt:	Q9UKB1

Application Details

Application Notes:	WB: 1:1000. IHC-P: 1:50~100. FC: 1:10~50
Restrictions:	For Research Use only

Handling

Format:	Liquid
Buffer:	Purified polyclonal antibody supplied in PBS with 0.09 % (W/V) sodium azide.
Preservative:	Sodium azide
Precaution of Use:	This product contains Sodium azide: a POISONOUS AND HAZARDOUS SUBSTANCE which should be handled by trained staff only.
Storage:	4 °C,-20 °C
Storage Comment:	Maintain refrigerated at 2-8 °C for up to 6 months. For long term storage store at -20 °C in small aliquots to prevent freeze-thaw cycles.
Expiry Date:	6 months



Flow Cytometry

Image 1. FBXW11 Antibody (Center) (ABIN655166 and ABIN2844782) flow cytometric analysis of HL-60 cells (right histogram) compared to a negative control cell (left histogram). FITC-conjugated goat-anti-rabbit secondary antibodies were used for the analysis.

Western Blotting

Image 2. FBXW11 Antibody (Center) (ABIN655166 and ABIN2844782) western blot analysis in HL-60 cell line lysates (35 µg/lane). This demonstrates the FBXW11 antibody detected the FBXW11 protein (arrow).

Immunohistochemistry (Paraffin-embedded Sections)

Image 3. FBXW11 Antibody (Center) (ABIN655166 and ABIN2844782) immunohistochemistry analysis in formalin fixed and paraffin embedded human brain tissue followed by peroxidase conjugation of the secondary antibody and DAB staining. This data demonstrates the use of FBXW11 Antibody (Center) for immunohistochemistry. Clinical relevance has not been evaluated.