

Datasheet for ABIN655170
anti-EIF2B4 antibody (AA 146-175)[Go to Product page](#)

3 Images

Overview

Quantity:	400 µL
Target:	EIF2B4
Binding Specificity:	AA 146-175
Reactivity:	Human, Mouse
Host:	Rabbit
Clonality:	Polyclonal
Conjugate:	This EIF2B4 antibody is un-conjugated
Application:	Western Blotting (WB), Immunohistochemistry (Paraffin-embedded Sections) (IHC (p))

Product Details

Immunogen:	This EIF2B4 antibody is generated from rabbits immunized with a KLH conjugated synthetic peptide between 146-175 amino acids from the Central region of human EIF2B4.
Clone:	RB18972
Isotype:	Ig Fraction
Predicted Reactivity:	B
Purification:	This antibody is purified through a protein A column, followed by peptide affinity purification.

Target Details

Target:	EIF2B4
Alternative Name:	EIF2B4 (EIF2B4 Products)

Target Details

Background:	Eukaryotic initiation factor 2B (EIF2B), which is necessary for protein synthesis, is a GTP exchange factor composed of five different subunits. The protein encoded by this gene is the fourth, or delta, subunit. Defects in this gene are a cause of leukoencephalopathy with vanishing white matter (VWM) and ovarioleukodystrophy. Multiple transcript variants encoding different isoforms have been found for this gene. [provided by RefSeq].
Molecular Weight:	57557
Gene ID:	8890
NCBI Accession:	NP_001029288 , NP_056451 , NP_751945
UniProt:	Q9UI10
Pathways:	Methionine Biosynthetic Process

Application Details

Application Notes:	WB: 1:1000. WB: 1:1000. IHC-P: 1:50~100
Restrictions:	For Research Use only

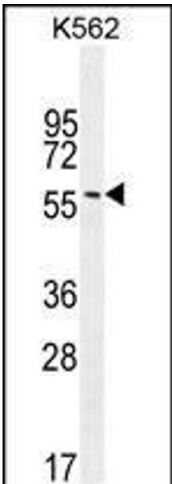
Handling

Format:	Liquid
Buffer:	Purified polyclonal antibody supplied in PBS with 0.09 % (W/V) sodium azide.
Preservative:	Sodium azide
Precaution of Use:	This product contains Sodium azide: a POISONOUS AND HAZARDOUS SUBSTANCE which should be handled by trained staff only.
Storage:	4 °C, -20 °C
Storage Comment:	Maintain refrigerated at 2-8 °C for up to 6 months. For long term storage store at -20 °C in small aliquots to prevent freeze-thaw cycles.
Expiry Date:	6 months



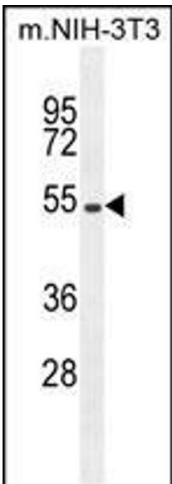
Immunohistochemistry (Paraffin-embedded Sections)

Image 1. EIF2B4 Antibody (Center) (ABIN655170 and ABIN2844788) immunohistochemistry analysis in formalin fixed and paraffin embedded human skeletal muscle followed by peroxidase conjugation of the secondary antibody and DAB staining. This data demonstrates the use of EIF2B4 Antibody (Center) for immunohistochemistry. Clinical relevance has not been evaluated.



Western Blotting

Image 2. EIF2B4 Antibody (Center) (ABIN655170 and ABIN2844788) western blot analysis in K562 cell line lysates (35 µg/lane). This demonstrates the EIF2B4 antibody detected the EIF2B4 protein (arrow).



Western Blotting

Image 3. EIF2B4 Antibody (Center) (ABIN655170 and ABIN2844788) western blot analysis in mouse NIH-3T3 cell line lysates (35 µg/lane). This demonstrates the EIF2B4 antibody detected the EIF2B4 protein (arrow).