

Datasheet for ABIN655179  
**anti-DPP3 antibody (C-Term)**[Go to Product page](#)

## 4 Images

## Overview

Quantity:	400 µL
Target:	DPP3
Binding Specificity:	AA 583-612, C-Term
Reactivity:	Human
Host:	Rabbit
Clonality:	Polyclonal
Conjugate:	This DPP3 antibody is un-conjugated
Application:	Western Blotting (WB), Flow Cytometry (FACS), Immunofluorescence (IF), Immunohistochemistry (Paraffin-embedded Sections) (IHC (p))

## Product Details

Immunogen:	This DPP3 antibody is generated from rabbits immunized with a KLH conjugated synthetic peptide between 583-612 amino acids from the C-terminal region of human DPP3.
Clone:	RB19606
Isotype:	Ig Fraction
Predicted Reactivity:	M
Purification:	This antibody is purified through a protein A column, followed by peptide affinity purification.

## Target Details

Target:	DPP3
---------	------

## Target Details

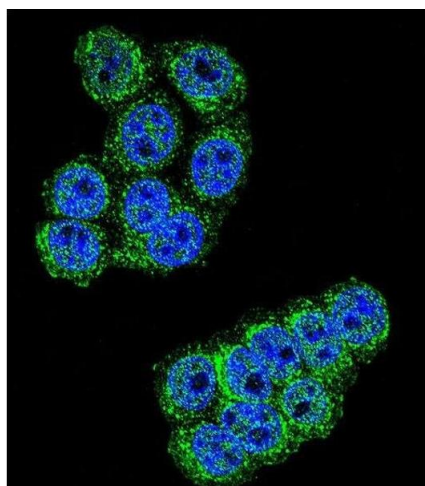
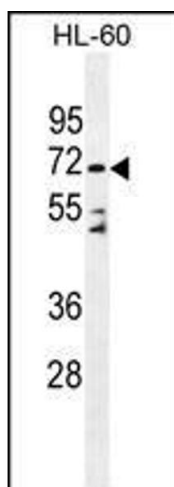
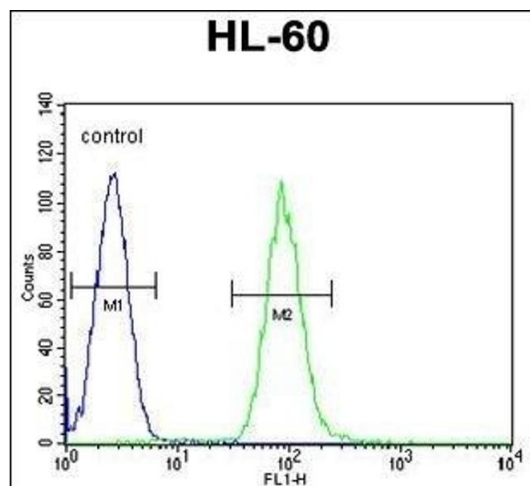
Alternative Name:	DPP3 ( <a href="#">DPP3 Products</a> )
Background:	This gene encodes a protein that is a member of the M49 family of metallopeptidases. This cytoplasmic protein binds a single zinc ion with its zinc-binding motif (HELLGH) and has post-proline dipeptidyl aminopeptidase activity, cleaving Xaa-Pro dipeptides from the N-termini of proteins. Increased activity of this protein is associated with endometrial and ovarian cancers. Alternate transcriptional splice variants have been characterized.
Molecular Weight:	82589
Gene ID:	10072
NCBI Accession:	<a href="#">NP_001243599</a> , <a href="#">NP_005691</a> , <a href="#">NP_569710</a>
UniProt:	<a href="#">Q9NY33</a>

## Application Details

Application Notes:	IF: 1:10~50. WB: 1:1000. IHC-P: 1:50~100. FC: 1:10~50
Restrictions:	For Research Use only

## Handling

Format:	Liquid
Buffer:	Purified polyclonal antibody supplied in PBS with 0.09 % (W/V) sodium azide.
Preservative:	Sodium azide
Precaution of Use:	This product contains Sodium azide: a POISONOUS AND HAZARDOUS SUBSTANCE which should be handled by trained staff only.
Storage:	4 °C, -20 °C
Storage Comment:	Maintain refrigerated at 2-8 °C for up to 6 months. For long term storage store at -20 °C in small aliquots to prevent freeze-thaw cycles.
Expiry Date:	6 months



### Flow Cytometry

**Image 1.** D Antibody (C-term) (ABIN655179 and ABIN2844796) flow cytometric analysis of HL-60 cells (right histogram) compared to a negative control cell (left histogram). FITC-conjugated goat-anti-rabbit secondary antibodies were used for the analysis.

### Western Blotting

**Image 2.** D Antibody (C-term) (ABIN655179 and ABIN2844796) western blot analysis in HL-60 cell line lysates (35 µg/lane). This demonstrates the D antibody detected the D protein (arrow).

### Immunofluorescence

**Image 3.** Confocal immunofluorescent analysis of D Antibody (C-term) (ABIN655179 and ABIN2844796) with HeLa cell followed by Alexa Fluor 488-conjugated goat anti-rabbit IgG (green). DAPI was used to stain the cell nuclear (blue).

Please check the [product details page](#) for more images. Overall 4 images are available for ABIN655179.