

Datasheet for ABIN655191
anti-CRH antibody (C-Term)[Go to Product page](#)

1 Image

Overview

Quantity:	400 µL
Target:	CRH
Binding Specificity:	AA 129-156, C-Term
Reactivity:	Human
Host:	Rabbit
Clonality:	Polyclonal
Conjugate:	This CRH antibody is un-conjugated
Application:	Western Blotting (WB)

Product Details

Immunogen:	This CRH antibody is generated from rabbits immunized with a KLH conjugated synthetic peptide between 129-156 amino acids from the C-terminal region of human CRH.
Clone:	RB23963
Isotype:	Ig Fraction
Purification:	This antibody is purified through a protein A column, followed by peptide affinity purification.

Target Details

Target:	CRH
Alternative Name:	CRH (CRH Products)
Background:	Corticotropin-releasing hormone is secreted by the paraventricular nucleus (PVN) of the

Target Details

hypothalamus in response to stress. Marked reduction in this protein has been observed in association with Alzheimer disease and autosomal recessive hypothalamic corticotropin deficiency has multiple and potentially fatal metabolic consequences including hypoglycemia and hepatitis. In addition to production in the hypothalamus, this protein is also synthesized in peripheral tissues, such as T lymphocytes and is highly expressed in the placenta. In the placenta it is a marker that determines the length of gestation and the timing of parturition and delivery. A rapid increase in circulating levels of the hormone occurs at the onset of parturition, suggesting that, in addition to its metabolic functions, this protein may act as a trigger for parturition.

Molecular Weight: 21422

Gene ID: 1392

NCBI Accession: [NP_000747](#)

UniProt: [P06850](#)

Pathways: [Positive Regulation of Peptide Hormone Secretion](#), [Hormone Activity](#), [Negative Regulation of Hormone Secretion](#), [cAMP Metabolic Process](#), [Myometrial Relaxation and Contraction](#), [Feeding Behaviour](#)

Application Details

Application Notes: WB: 1:1000

Restrictions: For Research Use only

Handling

Format: Liquid

Buffer: Purified polyclonal antibody supplied in PBS with 0.09 % (W/V) sodium azide.

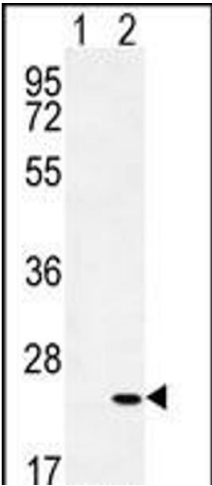
Preservative: Sodium azide

Precaution of Use: This product contains Sodium azide: a POISONOUS AND HAZARDOUS SUBSTANCE which should be handled by trained staff only.

Storage: 4 °C, -20 °C

Storage Comment: Maintain refrigerated at 2-8 °C for up to 6 months. For long term storage store at -20 °C in small aliquots to prevent freeze-thaw cycles.

Expiry Date: 6 months



Western Blotting

Image 1. Western blot analysis of CRH (arrow) using rabbit polyclonal CRH Antibody (C-term) (ABIN655191 and ABIN2844807). 293 cell lysates (2 µg/lane) either nontransfected (Lane 1) or transiently transfected (Lane 2) with the CRH gene.