

Datasheet for ABIN655192
anti-GIGYF1 antibody (AA 666-694)



[Go to Product page](#)

1 Image

Overview

Quantity:	400 µL
Target:	GIGYF1
Binding Specificity:	AA 666-694
Reactivity:	Human
Host:	Rabbit
Clonality:	Polyclonal
Conjugate:	This GIGYF1 antibody is un-conjugated
Application:	Western Blotting (WB)

Product Details

Immunogen:	This GIGYF1 antibody is generated from rabbits immunized with a KLH conjugated synthetic peptide between 666-694 amino acids from the Central region of human GIGYF1.
Clone:	RB24616
Isotype:	Ig Fraction
Predicted Reactivity:	M
Purification:	This antibody is purified through a protein A column, followed by peptide affinity purification.

Target Details

Target:	GIGYF1
Alternative Name:	GIGYF1 (GIGYF1 Products)

Target Details

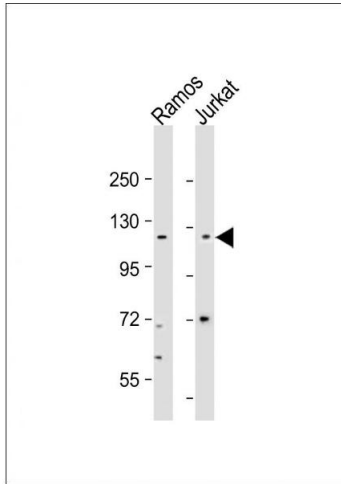
Background:	May act cooperatively with GRB10 to regulate tyrosine kinase receptor signaling. May increase IGF1 receptor phosphorylation under IGF1 stimulation as well as phosphorylation of IRS1 and SHC1 (By similarity).
Molecular Weight:	114601
Gene ID:	64599
NCBI Accession:	NP_072096
UniProt:	O75420

Application Details

Application Notes:	WB: 1:2000
Restrictions:	For Research Use only

Handling

Format:	Liquid
Buffer:	Purified polyclonal antibody supplied in PBS with 0.09 % (W/V) sodium azide.
Preservative:	Sodium azide
Precaution of Use:	This product contains Sodium azide: a POISONOUS AND HAZARDOUS SUBSTANCE which should be handled by trained staff only.
Storage:	4 °C, -20 °C
Storage Comment:	Maintain refrigerated at 2-8 °C for up to 6 months. For long term storage store at -20 °C in small aliquots to prevent freeze-thaw cycles.
Expiry Date:	6 months



Western Blotting

Image 1. All lanes : Anti-GIGYF1 Antibody (Center) at 1:2000 dilution Lane 1: Ramos whole cell lysate Lane 2: Jurkat whole cell lysate Lysates/proteins at 20 µg per lane. Secondary Goat Anti-Rabbit IgG, (H+L), Peroxidase conjugated at 1/10000 dilution. Predicted band size : 115 kDa Blocking/Dilution buffer: 5 % NFDM/TBST.