

Datasheet for ABIN655199
anti-Keratin 25 antibody (C-Term)[Go to Product page](#)

2 Images

Overview

Quantity:	400 µL
Target:	Keratin 25 (KRT25)
Binding Specificity:	AA 380-408, C-Term
Reactivity:	Human
Host:	Rabbit
Clonality:	Polyclonal
Conjugate:	This Keratin 25 antibody is un-conjugated
Application:	Western Blotting (WB), Flow Cytometry (FACS)

Product Details

Immunogen:	This KRT25 antibody is generated from rabbits immunized with a KLH conjugated synthetic peptide between 380-408 amino acids from the C-terminal region of human KRT25.
Clone:	RB28791
Isotype:	Ig Fraction
Purification:	This antibody is purified through a protein A column, followed by peptide affinity purification.

Target Details

Target:	Keratin 25 (KRT25)
Alternative Name:	KRT25 (KRT25 Products)
Background:	This gene encodes a member of the type I (acidic) keratin family, which belongs to the

Target Details

superfamily of intermediate filament (IF) proteins. Keratins are heteropolymeric structural proteins which form the intermediate filament. These filaments, along with actin microfilaments and microtubules, compose the cytoskeleton of epithelial cells. The type I keratin genes are clustered in a region of chromosome 17q12-q21.

Molecular Weight: 49318

Gene ID: 147183

NCBI Accession: [NP_853512](#)

UniProt: [Q7Z3Z0](#)

Application Details

Application Notes: WB: 1:1000. FC: 1:10~50

Restrictions: For Research Use only

Handling

Format: Liquid

Buffer: Purified polyclonal antibody supplied in PBS with 0.09 % (W/V) sodium azide.

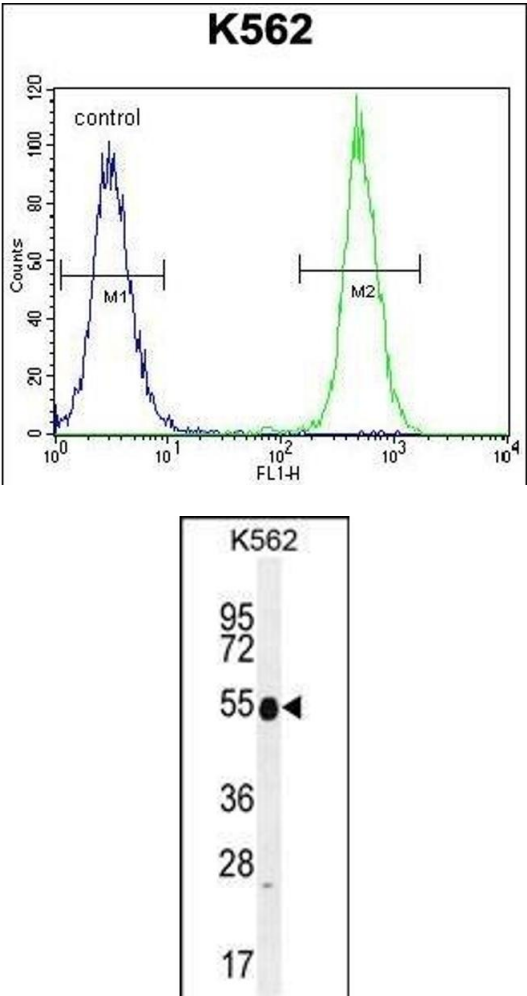
Preservative: Sodium azide

Precaution of Use: This product contains Sodium azide: a POISONOUS AND HAZARDOUS SUBSTANCE which should be handled by trained staff only.

Storage: 4 °C, -20 °C

Storage Comment: Maintain refrigerated at 2-8 °C for up to 6 months. For long term storage store at -20 °C in small aliquots to prevent freeze-thaw cycles.

Expiry Date: 6 months



Flow Cytometry

Image 1. KRT25 Antibody (C-term) (ABIN655199 and ABIN2844814) flow cytometric analysis of K562 cells (right histogram) compared to a negative control cell (left histogram).FITC-conjugated goat-anti-rabbit secondary antibodies were used for the analysis.

Western Blotting

Image 2. KRT25 Antibody (C-term) (ABIN655199 and ABIN2844814) western blot analysis in K562 cell line lysates (35 µg/lane).This demonstrates the KRT25 antibody detected the KRT25 protein (arrow).