



[Go to Product page](#)

Datasheet for ABIN655206
anti-OR2W3 antibody (C-Term)

2 Images

Overview

Quantity:	400 µL
Target:	OR2W3
Binding Specificity:	AA 286-314, C-Term
Reactivity:	Human
Host:	Rabbit
Clonality:	Polyclonal
Conjugate:	This OR2W3 antibody is un-conjugated
Application:	Western Blotting (WB), Flow Cytometry (FACS)

Product Details

Immunogen:	This OR2W3 antibody is generated from rabbits immunized with a KLH conjugated synthetic peptide between 286-314 amino acids from the C-terminal region of human OR2W3.
Clone:	RB28808
Isotype:	Ig Fraction
Purification:	This antibody is purified through a protein A column, followed by peptide affinity purification.

Target Details

Target:	OR2W3
Alternative Name:	OR2W3 (OR2W3 Products)
Background:	Olfactory receptors interact with odorant molecules in the nose, to initiate a neuronal response

Target Details

that triggers the perception of a smell. The olfactory receptor proteins are members of a large family of G-protein-coupled receptors (GPCR) arising from single coding-exon genes. Olfactory receptors share a 7-transmembrane domain structure with many neurotransmitter and hormone receptors and are responsible for the recognition and G protein-mediated transduction of odorant signals. The olfactory receptor gene family is the largest in the genome. The nomenclature assigned to the olfactory receptor genes and proteins for this organism is independent of other organisms.

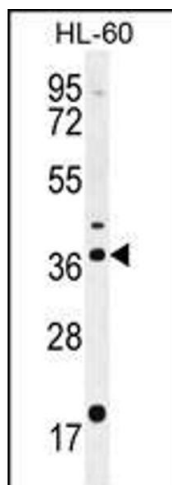
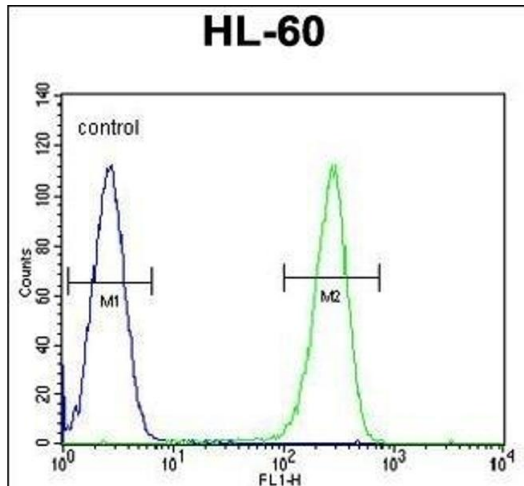
Molecular Weight:	34789
Gene ID:	343171
NCBI Accession:	NP_001001957
UniProt:	Q7Z3T1

Application Details

Application Notes:	WB: 1:1000. FC: 1:10~50
Restrictions:	For Research Use only

Handling

Format:	Liquid
Buffer:	Purified polyclonal antibody supplied in PBS with 0.09 % (W/V) sodium azide.
Preservative:	Sodium azide
Precaution of Use:	This product contains Sodium azide: a POISONOUS AND HAZARDOUS SUBSTANCE which should be handled by trained staff only.
Storage:	4 °C,-20 °C
Storage Comment:	Maintain refrigerated at 2-8 °C for up to 6 months. For long term storage store at -20 °C in small aliquots to prevent freeze-thaw cycles.
Expiry Date:	6 months



Flow Cytometry

Image 1. OR2W3 Antibody (C-term) (ABIN655206 and ABIN2844819) flow cytometric analysis of HL-60 cells (right histogram) compared to a negative control cell (left histogram). FITC-conjugated goat-anti-rabbit secondary antibodies were used for the analysis.

Western Blotting

Image 2. OR2W3 Antibody (C-term) (ABIN655206 and ABIN2844819) western blot analysis in HL-60 cell line lysates (35 µg/lane). This demonstrates the OR2W3 antibody detected the OR2W3 protein (arrow).