

Datasheet for ABIN655207
anti-GPR142 antibody (N-Term)

2 Images

[Go to Product page](#)

Overview

Quantity:	400 µL
Target:	GPR142
Binding Specificity:	AA 86-114, N-Term
Reactivity:	Human
Host:	Rabbit
Clonality:	Polyclonal
Conjugate:	This GPR142 antibody is un-conjugated
Application:	Western Blotting (WB), Flow Cytometry (FACS)

Product Details

Immunogen:	This GPR142 antibody is generated from rabbits immunized with a KLH conjugated synthetic peptide between 86-114 amino acids from the N-terminal region of human GPR142.
Clone:	RB28809
Isotype:	Ig Fraction
Purification:	This antibody is purified through a protein A column, followed by peptide affinity purification.

Target Details

Target:	GPR142
Alternative Name:	GPR142 (GPR142 Products)
Background:	GPR142 is a member of the rhodopsin family of G protein-coupled receptors (GPRs)

Target Details

(Fredriksson et al., 2003 [PubMed 14623098]).

Molecular Weight: 51106

Gene ID: 350383

NCBI Accession: [NP_861455](#)

UniProt: [Q7Z601](#)

Application Details

Application Notes: WB: 1:1000. FC: 1:10~50

Restrictions: For Research Use only

Handling

Format: Liquid

Buffer: Purified polyclonal antibody supplied in PBS with 0.09 % (W/V) sodium azide.

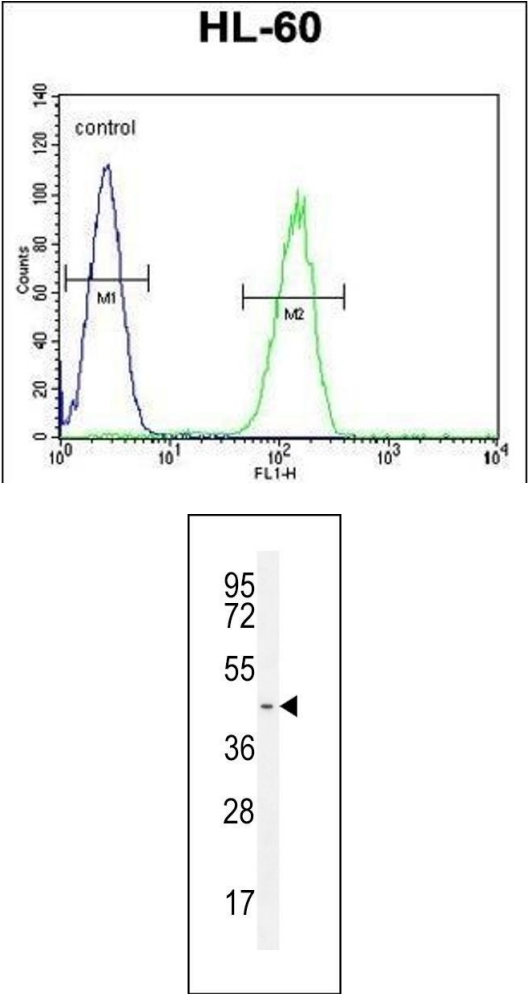
Preservative: Sodium azide

Precaution of Use: This product contains Sodium azide: a POISONOUS AND HAZARDOUS SUBSTANCE which should be handled by trained staff only.

Storage: 4 °C, -20 °C

Storage Comment: Maintain refrigerated at 2-8 °C for up to 6 months. For long term storage store at -20 °C in small aliquots to prevent freeze-thaw cycles.

Expiry Date: 6 months



Flow Cytometry

Image 1. GP Antibody (N-term) (ABIN655207 and ABIN2844821) flow cytometric analysis of HL-60 cells (right histogram) compared to a negative control cell (left histogram).FITC-conjugated goat-anti-rabbit secondary antibodies were used for the analysis.

Western Blotting

Image 2. GP Antibody (N-term) (ABIN655207 and ABIN2844821) western blot analysis in HL-60 cell line lysates (35 µg/lane).This demonstrates the GP antibody detected the GP protein (arrow).