

Datasheet for ABIN655213
anti-EXOC3L1 antibody (C-Term)[Go to Product page](#)

4 Images

Overview

Quantity:	400 µL
Target:	EXOC3L1
Binding Specificity:	AA 652-680, C-Term
Reactivity:	Human, Mouse
Host:	Rabbit
Clonality:	Polyclonal
Conjugate:	This EXOC3L1 antibody is un-conjugated
Application:	Western Blotting (WB), Immunofluorescence (IF), Immunohistochemistry (Paraffin-embedded Sections) (IHC (p))

Product Details

Immunogen:	This EXOC3L antibody is generated from rabbits immunized with a KLH conjugated synthetic peptide between 652-680 amino acids from the C-terminal region of human EXOC3L.
Clone:	RB28875
Isotype:	Ig Fraction
Predicted Reactivity:	B
Purification:	This antibody is purified through a protein A column, followed by peptide affinity purification.

Target Details

Target:	EXOC3L1
---------	---------

Target Details

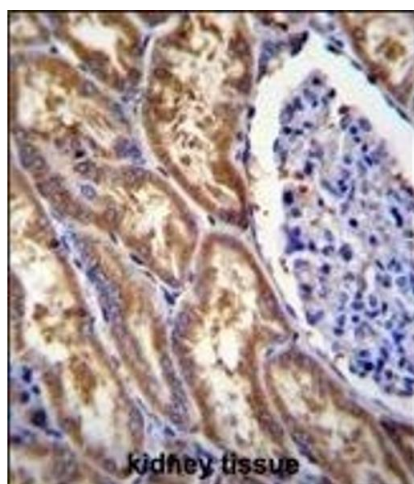
Alternative Name:	EXOC3L (EXOC3L1 Products)
Molecular Weight:	81678
Gene ID:	283849
NCBI Accession:	NP_848611
UniProt:	Q86V11
Pathways:	Hormone Transport

Application Details

Application Notes:	IF: 1:10~50. WB: 1:1000. WB: 1:1000. IHC-P: 1:10~50
Restrictions:	For Research Use only

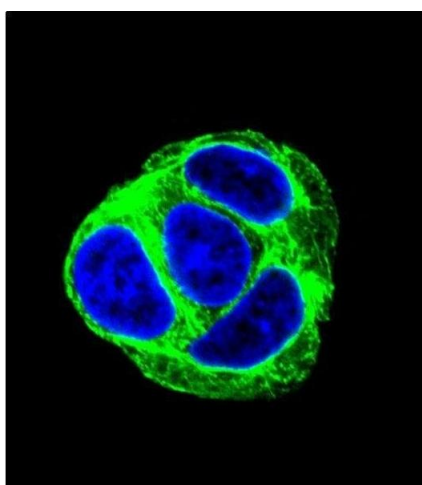
Handling

Format:	Liquid
Buffer:	Purified polyclonal antibody supplied in PBS with 0.09 % (W/V) sodium azide.
Preservative:	Sodium azide
Precaution of Use:	This product contains Sodium azide: a POISONOUS AND HAZARDOUS SUBSTANCE which should be handled by trained staff only.
Storage:	4 °C,-20 °C
Storage Comment:	Maintain refrigerated at 2-8 °C for up to 6 months. For long term storage store at -20 °C in small aliquots to prevent freeze-thaw cycles.
Expiry Date:	6 months



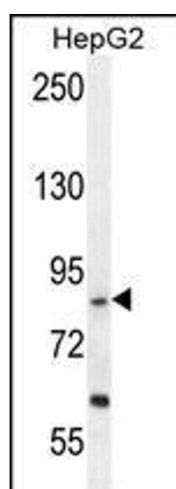
Immunohistochemistry (Paraffin-embedded Sections)

Image 1. EXOC3L Antibody (C-term) (ABIN655213 and ABIN2844825) immunohistochemistry analysis in formalin fixed and paraffin embedded human kidney tissue followed by peroxidase conjugation of the secondary antibody and DAB staining. This data demonstrates the use of EXOC3L Antibody (C-term) for immunohistochemistry. Clinical relevance has not been evaluated.



Immunofluorescence

Image 2. Confocal immunofluorescent analysis of EXOC3L Antibody (C-term) (ABIN655213 and ABIN2844825) with HepG2 cell followed by Alexa Fluor 488-conjugated goat anti-rabbit IgG (green). DAPI was used to stain the cell nuclei (blue).



Western Blotting

Image 3. EXOC3L Antibody (C-term) (ABIN655213 and ABIN2844825) western blot analysis in HepG2 cell line lysates (35 µg/lane). This demonstrates the EXOC3L antibody detected the EXOC3L protein (arrow).

Please check the [product details page](#) for more images. Overall 4 images are available for ABIN655213.