



Datasheet for ABIN655214
anti-ZGRF1 antibody (N-Term)



[Go to Product page](#)

4 Images

Overview

Quantity:	400 µL
Target:	ZGRF1
Binding Specificity:	AA 38-66, N-Term
Reactivity:	Human, Mouse
Host:	Rabbit
Clonality:	Polyclonal
Conjugate:	This ZGRF1 antibody is un-conjugated
Application:	Western Blotting (WB), Immunofluorescence (IF), Immunohistochemistry (Paraffin-embedded Sections) (IHC (p))

Product Details

Immunogen:	This C4orf21 antibody is generated from rabbits immunized with a KLH conjugated synthetic peptide between 38-66 amino acids from the N-terminal region of human C4orf21.
Clone:	RB28876
Isotype:	Ig Fraction
Purification:	This antibody is purified through a protein A column, followed by peptide affinity purification.

Target Details

Target:	ZGRF1
Alternative Name:	C4orf21 (ZGRF1 Products)

Target Details

Molecular Weight:	236602
Gene ID:	55345
NCBI Accession:	NP_060862
UniProt:	Q86YA3

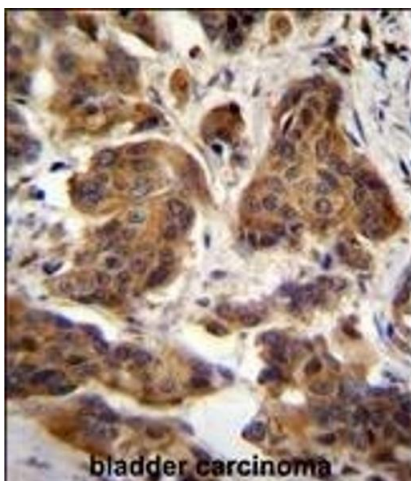
Application Details

Application Notes:	IF: 1:10~50. WB: 1:1000. WB: 1:1000. IHC-P: 1:50~100
Restrictions:	For Research Use only

Handling

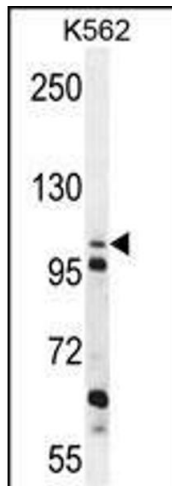
Format:	Liquid
Buffer:	Purified polyclonal antibody supplied in PBS with 0.09 % (W/V) sodium azide.
Preservative:	Sodium azide
Precaution of Use:	This product contains Sodium azide: a POISONOUS AND HAZARDOUS SUBSTANCE which should be handled by trained staff only.
Storage:	4 °C,-20 °C
Storage Comment:	Maintain refrigerated at 2-8 °C for up to 6 months. For long term storage store at -20 °C in small aliquots to prevent freeze-thaw cycles.
Expiry Date:	6 months

Images



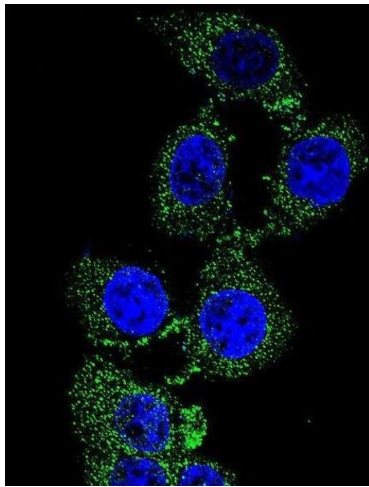
Immunohistochemistry (Paraffin-embedded Sections)

Image 1. C4orf21 Antibody (N-term) (ABIN655214 and ABIN2850480) immunohistochemistry analysis in formalin fixed and paraffin embedded human bladder carcinoma followed by peroxidase conjugation of the secondary antibody and DAB staining. This data demonstrates the use of C4orf21 Antibody (N-term) for immunohistochemistry. Clinical relevance has not been evaluated.



Western Blotting

Image 2. C4orf21 Antibody (N-term) (ABIN655214 and ABIN2850480) western blot analysis in K562 cell line lysates (35 µg/lane). This demonstrates the C4orf21 antibody detected the C4orf21 protein (arrow).



Immunofluorescence

Image 3. Confocal immunofluorescent analysis of C4orf21 Antibody (N-term) (ABIN655214 and ABIN2850480) with 293 cell followed by Alexa Fluor 488-conjugated goat anti-rabbit IgG (green). DAPI was used to stain the cell nuclear (blue).

Please check the [product details page](#) for more images. Overall 4 images are available for ABIN655214.