

Datasheet for ABIN655227  
**anti-NUDT22 antibody (C-Term)**

## 3 Images

[Go to Product page](#)

## Overview

Quantity:	400 µL
Target:	NUDT22
Binding Specificity:	AA 220-249, C-Term
Reactivity:	Human
Host:	Rabbit
Clonality:	Polyclonal
Conjugate:	This NUDT22 antibody is un-conjugated
Application:	Western Blotting (WB), Flow Cytometry (FACS), Immunohistochemistry (Paraffin-embedded Sections) (IHC (p))

## Product Details

Immunogen:	This NUDT22 antibody is generated from rabbits immunized with a KLH conjugated synthetic peptide between 220-249 amino acids from the C-terminal region of human NUDT22.
Clone:	RB28926
Isotype:	Ig Fraction
Purification:	This antibody is purified through a protein A column, followed by peptide affinity purification.

## Target Details

Target:	NUDT22
Alternative Name:	NUDT22 ( <a href="#">NUDT22 Products</a> )

## Target Details

Molecular Weight:	32580
Gene ID:	84304
NCBI Accession:	<a href="#">NP_001122084</a> , <a href="#">NP_001122085</a> , <a href="#">NP_001258760</a> , <a href="#">NP_115720</a>
UniProt:	<a href="#">Q9BRQ3</a>

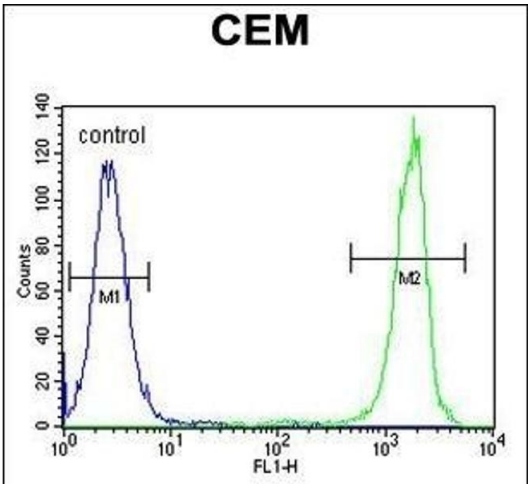
## Application Details

Application Notes:	WB: 1:1000. IHC-P: 1:50~100. FC: 1:10~50
Restrictions:	For Research Use only

## Handling

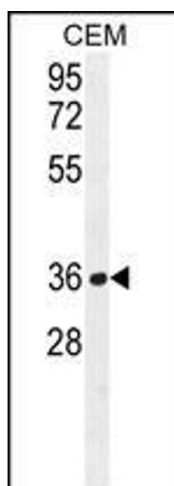
Format:	Liquid
Buffer:	Purified polyclonal antibody supplied in PBS with 0.09 % (W/V) sodium azide.
Preservative:	Sodium azide
Precaution of Use:	This product contains Sodium azide: a POISONOUS AND HAZARDOUS SUBSTANCE which should be handled by trained staff only.
Storage:	4 °C, -20 °C
Storage Comment:	Maintain refrigerated at 2-8 °C for up to 6 months. For long term storage store at -20 °C in small aliquots to prevent freeze-thaw cycles.
Expiry Date:	6 months

## Images



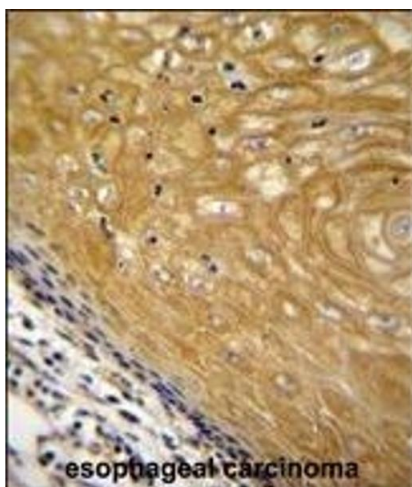
### Flow Cytometry

**Image 1.** NUDT22 Antibody (C-term) (ABIN655227 and ABIN2844833) flow cytometric analysis of CEM cells (right histogram) compared to a negative control cell (left histogram). FITC-conjugated goat-anti-rabbit secondary antibodies were used for the analysis.



#### Western Blotting

**Image 2.** NUDT22 Antibody (C-term) (ABIN655227 and ABIN2844833) western blot analysis in CEM cell line lysates (35 µg/lane). This demonstrates the NUDT22 antibody detected the NUDT22 protein (arrow).



#### Immunohistochemistry (Paraffin-embedded Sections)

**Image 3.** NUDT22 Antibody (C-term) (ABIN655227 and ABIN2844833) immunohistochemistry analysis in formalin fixed and paraffin embedded human esophageal carcinoma followed by peroxidase conjugation of the secondary antibody and DAB staining. This data demonstrates the use of NUDT22 Antibody (C-term) for immunohistochemistry. Clinical relevance has not been evaluated.