



[Go to Product page](#)

Datasheet for ABIN655228
anti-CYB5D2 antibody (C-Term)

1 Image

Overview

Quantity:	400 µL
Target:	CYB5D2
Binding Specificity:	AA 187-216, C-Term
Reactivity:	Mouse
Host:	Rabbit
Clonality:	Polyclonal
Conjugate:	This CYB5D2 antibody is un-conjugated
Application:	Western Blotting (WB)

Product Details

Immunogen:	This CYB5D2 antibody is generated from rabbits immunized with a KLH conjugated synthetic peptide between 187-216 amino acids from the C-terminal region of human CYB5D2.
Clone:	RB28927
Isotype:	Ig Fraction
Purification:	This antibody is purified through a protein A column, followed by peptide affinity purification.

Target Details

Target:	CYB5D2
Alternative Name:	CYB5D2 (CYB5D2 Products)
Background:	Heme-binding protein which promotes neuronal but not astrocyte differentiation (By similarity).

Target Details

Molecular Weight:	28690
Gene ID:	124936
NCBI Accession:	NP_001241684 , NP_001241685 , NP_653212
UniProt:	Q8WUJ1

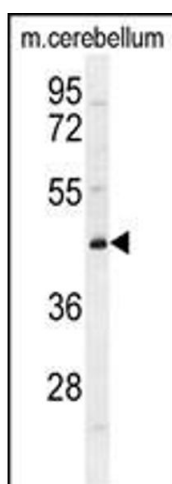
Application Details

Application Notes:	WB: 1:1000
Restrictions:	For Research Use only

Handling

Format:	Liquid
Buffer:	Purified polyclonal antibody supplied in PBS with 0.09 % (W/V) sodium azide.
Preservative:	Sodium azide
Precaution of Use:	This product contains Sodium azide: a POISONOUS AND HAZARDOUS SUBSTANCE which should be handled by trained staff only.
Storage:	4 °C, -20 °C
Storage Comment:	Maintain refrigerated at 2-8 °C for up to 6 months. For long term storage store at -20 °C in small aliquots to prevent freeze-thaw cycles.
Expiry Date:	6 months

Images



Western Blotting

Image 1. CYB5D2 Antibody (C-term) (ABIN655228 and ABIN2844834) western blot analysis in mouse cerebellum tissue lysates (35 µg/lane). This demonstrates the CYB5D2 antibody detected the CYB5D2 protein (arrow).