

Datasheet for ABIN655233  
**anti-PLD6 antibody (AA 125-154)**[Go to Product page](#)

## 4 Images

## Overview

Quantity:	400 µL
Target:	PLD6
Binding Specificity:	AA 125-154
Reactivity:	Human, Mouse
Host:	Rabbit
Clonality:	Polyclonal
Conjugate:	This PLD6 antibody is un-conjugated
Application:	Western Blotting (WB)

## Product Details

Immunogen:	This PLD6 antibody is generated from rabbits immunized with a KLH conjugated synthetic peptide between 125-154 amino acids from of human PLD6.
Clone:	RB28958
Isotype:	IgG
Purification:	This antibody is purified through a protein A column, followed by peptide affinity purification.

## Target Details

Target:	PLD6
Alternative Name:	PLD6 ( <a href="#">PLD6 Products</a> )
Molecular Weight:	28273

## Target Details

Gene ID:	201164
NCBI Accession:	<a href="#">NP_849158</a>
UniProt:	<a href="#">Q8N2A8</a>
Pathways:	<a href="#">Ribonucleoprotein Complex Subunit Organization</a>

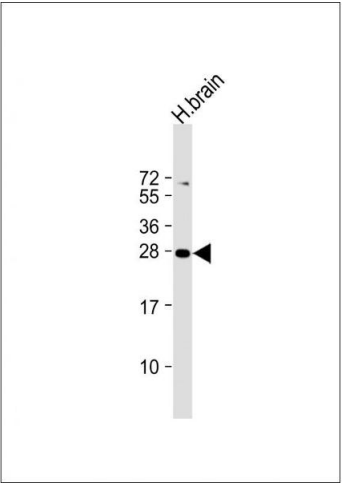
## Application Details

Application Notes:	WB: 1:1000. WB: 1:1000. WB: 1:2000. WB: 1:2000
Restrictions:	For Research Use only

## Handling

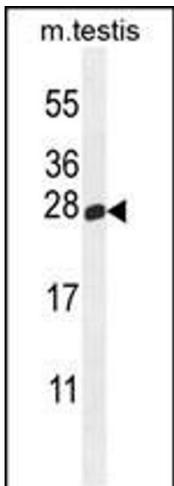
Format:	Liquid
Buffer:	Purified polyclonal antibody supplied in PBS with 0.09 % (W/V) sodium azide.
Preservative:	Sodium azide
Precaution of Use:	This product contains Sodium azide: a POISONOUS AND HAZARDOUS SUBSTANCE which should be handled by trained staff only.
Storage:	4 °C,-20 °C
Storage Comment:	Maintain refrigerated at 2-8 °C for up to 6 months. For long term storage store at -20 °C in small aliquots to prevent freeze-thaw cycles.
Expiry Date:	6 months

## Images



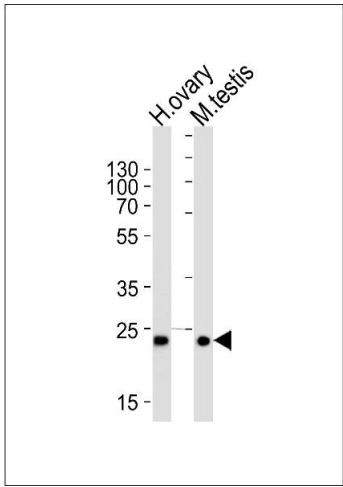
### Western Blotting

**Image 1.** Anti-PLD6 Antibody (Center) at 1:2000 dilution + human brain lysate Lysates/proteins at 20 µg per lane. Secondary Goat Anti-Rabbit IgG, (H+L), Peroxidase conjugated at 1/10000 dilution. Predicted band size : 28 kDa  
Blocking/Dilution buffer: 5 % NFDm/TBST.



Western Blotting

**Image 2.** PLD6 Antibody (Center) (ABIN655233 and ABIN2844837) western blot analysis in mouse testis tissue lysates (35 µg/lane). This demonstrates the PLD6 antibody detected the PLD6 protein (arrow).



Western Blotting

**Image 3.** Western blot analysis of lysates from human ovary and mouse testis tissue lysates (from left to right), using PLD6 Antibody (Center) (ABIN655233 and ABIN2844837). (ABIN655233 and ABIN2844837) was diluted at 1:1000 at each lane. A goat anti-rabbit IgG H&L(HRP) at 1:5000 dilution was used as the secondary antibody. Lysates at 35 µg per lane.

Please check the [product details page](#) for more images. Overall 4 images are available for ABIN655233.