



[Go to Product page](#)

Datasheet for ABIN655235

## anti-ALDH1L2 antibody (C-Term)

### 2 Images

#### Overview

Quantity:	400 µL
Target:	ALDH1L2
Binding Specificity:	AA 743-772, C-Term
Reactivity:	Mouse, Rat
Host:	Rabbit
Clonality:	Polyclonal
Conjugate:	This ALDH1L2 antibody is un-conjugated
Application:	Western Blotting (WB), Immunohistochemistry (Paraffin-embedded Sections) (IHC (p))

#### Product Details

Immunogen:	This ALDH1L2 antibody is generated from rabbits immunized with a KLH conjugated synthetic peptide between 743-772 amino acids from the C-terminal region of human ALDH1L2.
Clone:	RB28965
Isotype:	Ig Fraction
Predicted Reactivity:	X
Purification:	This antibody is purified through a protein A column, followed by peptide affinity purification.

#### Target Details

Target:	ALDH1L2
Alternative Name:	ALDH1L2 ( <a href="#">ALDH1L2 Products</a> )

## Target Details

Molecular Weight: 101746

Gene ID: 160428

NCBI Accession: [NP\\_001029345](#)

UniProt: [Q3SY69](#)

## Application Details

Application Notes: WB: 1:2000. IHC-P: 1:50~100

Restrictions: For Research Use only

## Handling

Format: Liquid

Buffer: Purified polyclonal antibody supplied in PBS with 0.09 % (W/V) sodium azide.

Preservative: Sodium azide

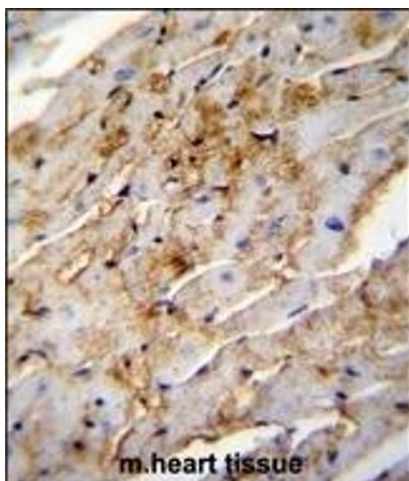
Precaution of Use: This product contains Sodium azide: a POISONOUS AND HAZARDOUS SUBSTANCE which should be handled by trained staff only.

Storage: 4 °C,-20 °C

Storage Comment: Maintain refrigerated at 2-8 °C for up to 6 months. For long term storage store at -20 °C in small aliquots to prevent freeze-thaw cycles.

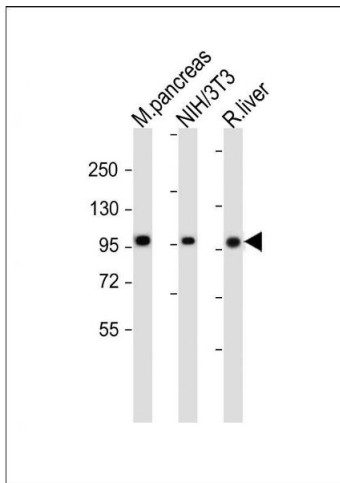
Expiry Date: 6 months

## Images



### Immunohistochemistry (Paraffin-embedded Sections)

**Image 1.** ALDH1L2 Antibody (C-term) (ABIN655235 and ABIN2844839) immunohistochemistry analysis in formalin fixed and paraffin embedded mouse heart tissue followed by peroxidase conjugation of the secondary antibody and DAB staining. This data demonstrates the use of ALDH1L2 Antibody (C-term) for immunohistochemistry. Clinical relevance has not been evaluated.



### Western Blotting

**Image 2.** All lanes : Anti-ALDH1L2 Antibody (C-term) at 1:2000 dilution Lane 1: Mouse pancreas whole cell lysate Lane 2: NIH/3T3 whole cell lysate Lane 3: Rat liver whole lysate Lysates/proteins at 20  $\mu$ g per lane. Secondary Goat Anti-Rabbit IgG, (H+L), Peroxidase conjugated at 1/10000 dilution. Predicted band size : 102 kDa Blocking/Dilution buffer: 5 % NFDM/TBST.