



[Go to Product page](#)

Datasheet for ABIN655239

anti-TSPY-Like 6 antibody (AA 206-235)

4 Images

Overview

Quantity:	400 µL
Target:	TSPY-Like 6 (TSPYL6)
Binding Specificity:	AA 206-235
Reactivity:	Human
Host:	Rabbit
Clonality:	Polyclonal
Conjugate:	This TSPY-Like 6 antibody is un-conjugated
Application:	Western Blotting (WB), Flow Cytometry (FACS), Immunofluorescence (IF), Immunohistochemistry (Paraffin-embedded Sections) (IHC (p))

Product Details

Immunogen:	This TSPYL6 antibody is generated from rabbits immunized with a KLH conjugated synthetic peptide between 206-235 amino acids from the Central region of human TSPYL6.
Clone:	RB28990
Isotype:	Ig Fraction
Purification:	This antibody is purified through a protein A column, followed by peptide affinity purification.

Target Details

Target:	TSPY-Like 6 (TSPYL6)
Alternative Name:	TSPYL6 (TSPYL6 Products)

Target Details

Molecular Weight:	45874
Gene ID:	388951
NCBI Accession:	NP_001003937
UniProt:	Q8N831

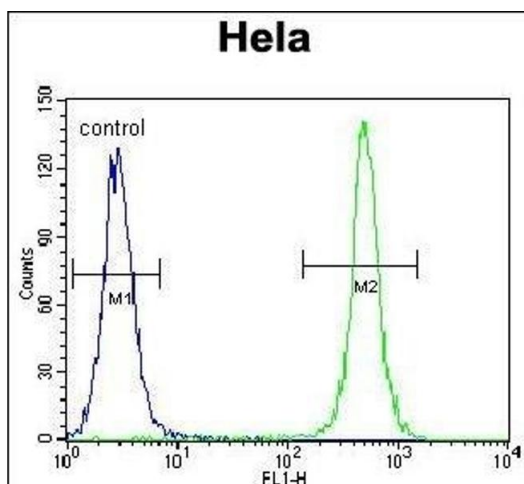
Application Details

Application Notes:	IF: 1:10~50. WB: 1:1000. IHC-P: 1:50~100. FC: 1:10~50
Restrictions:	For Research Use only

Handling

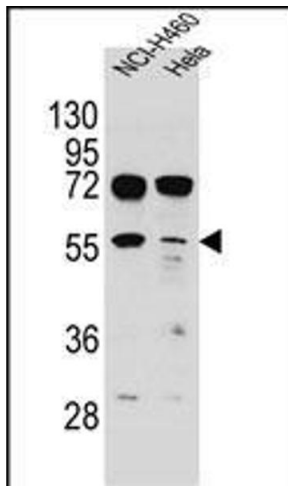
Format:	Liquid
Buffer:	Purified polyclonal antibody supplied in PBS with 0.09 % (W/V) sodium azide.
Preservative:	Sodium azide
Precaution of Use:	This product contains Sodium azide: a POISONOUS AND HAZARDOUS SUBSTANCE which should be handled by trained staff only.
Storage:	4 °C,-20 °C
Storage Comment:	Maintain refrigerated at 2-8 °C for up to 6 months. For long term storage store at -20 °C in small aliquots to prevent freeze-thaw cycles.
Expiry Date:	6 months

Images



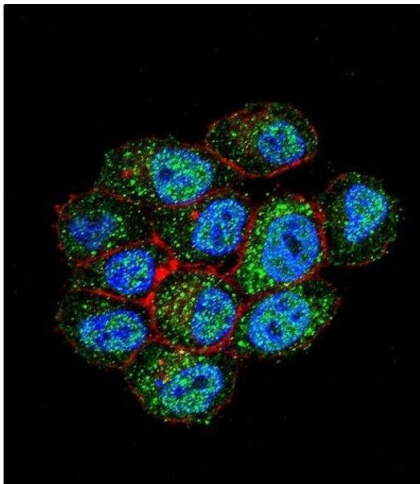
Flow Cytometry

Image 1. TSPYL6 Antibody (Center) (ABIN655239 and ABIN2844842) flow cytometric analysis of HeLa cells (right histogram) compared to a negative control cell (left histogram). FITC-conjugated goat-anti-rabbit secondary antibodies were used for the analysis.



Western Blotting

Image 2. TSPYL6 Antibody (Center) (ABIN655239 and ABIN2844842) western blot analysis in NCI,HeLa cell line lysates (35 µg/lane).This demonstrates the TSPYL6 antibody detected the TSPYL6 protein (arrow).



Immunofluorescence

Image 3. Confocal immunofluorescent analysis of TSPYL6 Antibody (Center) (ABIN655239 and ABIN2844842) with HeLa cell followed by Alexa Fluor 488-conjugated goat anti-rabbit IgG (green). Actin filaments have been labeled with Alexa Fluor555 phalloidin (red). DI was used to stain the cell nuclear (blue).

Please check the [product details page](#) for more images. Overall 4 images are available for ABIN655239.