



[Go to Product page](#)

Datasheet for ABIN655241
anti-CCDC102A antibody (C-Term)

2 Images

Overview

Quantity:	400 µL
Target:	CCDC102A
Binding Specificity:	AA 401-430, C-Term
Reactivity:	Mouse
Host:	Rabbit
Clonality:	Polyclonal
Conjugate:	This CCDC102A antibody is un-conjugated
Application:	Western Blotting (WB), Immunohistochemistry (Paraffin-embedded Sections) (IHC (p))

Product Details

Immunogen:	This CCDC102A antibody is generated from rabbits immunized with a KLH conjugated synthetic peptide between 401-430 amino acids from the C-terminal region of human CCDC102A.
Clone:	RB28997
Isotype:	Ig Fraction
Predicted Reactivity:	B
Purification:	This antibody is purified through a protein A column, followed by peptide affinity purification.

Target Details

Target:	CCDC102A
---------	----------

Target Details

Alternative Name: [CCDC102A \(CCDC102A Products\)](#)

Molecular Weight: 62596

Gene ID: 92922

NCBI Accession: [NP_149989](#)

UniProt: [Q96A19](#)

Application Details

Application Notes: WB: 1:1000. IHC-P: 1:50~100

Restrictions: For Research Use only

Handling

Format: Liquid

Buffer: Purified polyclonal antibody supplied in PBS with 0.09 % (W/V) sodium azide.

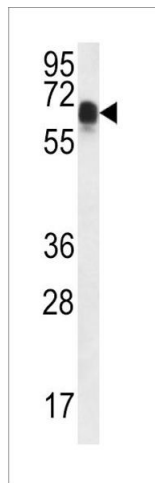
Preservative: Sodium azide

Precaution of Use: This product contains Sodium azide: a POISONOUS AND HAZARDOUS SUBSTANCE which should be handled by trained staff only.

Storage: 4 °C,-20 °C

Storage Comment: Maintain refrigerated at 2-8 °C for up to 6 months. For long term storage store at -20 °C in small aliquots to prevent freeze-thaw cycles.

Expiry Date: 6 months



Immunohistochemistry (Paraffin-embedded Sections)

Image 1. CCDC102A Antibody (C-term) (ABIN655241 and ABIN2844844) immunohistochemistry analysis in formalin fixed and paraffin embedded human cervical tissue followed by peroxidase conjugation of the secondary antibody and DAB staining. This data demonstrates the use of CCDC102A Antibody (C-term) for immunohistochemistry. Clinical relevance has not been evaluated.

Western Blotting

Image 2. CCDC102A Antibody (C-term) (ABIN655241 and ABIN2844844) western blot analysis in mouse bladder tissue lysates (35 µg/lane). This demonstrates the CCDC102A antibody detected the CCDC102A protein (arrow).