

Datasheet for ABIN655251  
**anti-YOD1 antibody (C-Term)**[Go to Product page](#)

4 Images

1 Publication

## Overview

Quantity:	400 µL
Target:	YOD1
Binding Specificity:	AA 319-347, C-Term
Reactivity:	Human
Host:	Rabbit
Clonality:	Polyclonal
Conjugate:	This YOD1 antibody is un-conjugated
Application:	Western Blotting (WB), Immunofluorescence (IF), Immunohistochemistry (Paraffin-embedded Sections) (IHC (p))

## Product Details

Immunogen:	This YOD1 antibody is generated from rabbits immunized with a KLH conjugated synthetic peptide between 319-347 amino acids from the C-terminal region of human YOD1.
Clone:	RB29107
Isotype:	Ig Fraction
Predicted Reactivity:	C, Zf
Purification:	This antibody is purified through a protein A column, followed by peptide affinity purification.

## Target Details

Target:	YOD1
---------	------

## Target Details

Alternative Name:	YOD1 ( <a href="#">YOD1 Products</a> )
Background:	Deubiquitinating enzymes (DUBs, see MIM 603478) are proteases that specifically cleave ubiquitin (MIM 191339) linkages, negating the action of ubiquitin ligases. DUBA8 belongs to a DUB subfamily characterized by an ovarian tumor (OTU) domain.[supplied by OMIM].
Molecular Weight:	38322
Gene ID:	55432
NCBI Accession:	<a href="#">NP_001263249</a> , <a href="#">NP_061036</a>
UniProt:	<a href="#">Q5VVQ6</a>
Pathways:	<a href="#">ER-Nucleus Signaling</a>

## Application Details

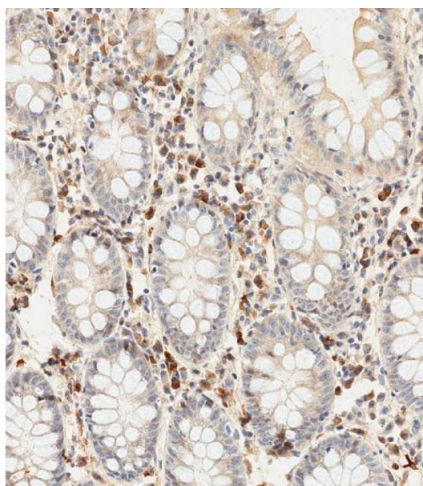
Application Notes:	IF: 1:10~50. WB: 1:2000. WB: 1:1000. IHC-P-Leica: 1:500
Restrictions:	For Research Use only

## Handling

Format:	Liquid
Buffer:	Purified polyclonal antibody supplied in PBS with 0.09 % (W/V) sodium azide.
Preservative:	Sodium azide
Precaution of Use:	This product contains Sodium azide: a POISONOUS AND HAZARDOUS SUBSTANCE which should be handled by trained staff only.
Storage:	4 °C, -20 °C
Storage Comment:	Maintain refrigerated at 2-8 °C for up to 6 months. For long term storage store at -20 °C in small aliquots to prevent freeze-thaw cycles.
Expiry Date:	6 months

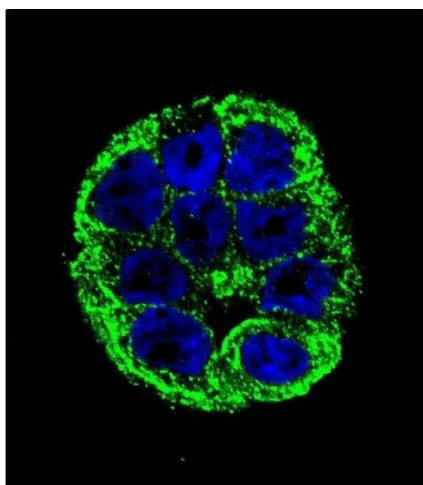
## Publications

Product cited in:	Bernardi, Williams, Inoue, Schultz, Tsai: "A deubiquitinase negatively regulates retro-translocation of nonubiquitinated substrates." in: <b>Molecular biology of the cell</b> , Vol. 24, Issue 22, pp. 3545-56, (2013) ( <a href="#">PubMed</a> ).
-------------------	---



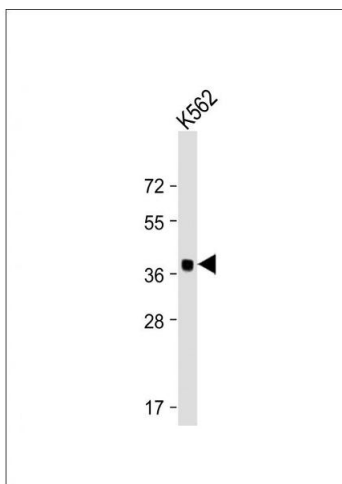
#### Immunohistochemistry (Paraffin-embedded Sections)

**Image 1.** Immunohistochemical analysis of paraffin-embedded human colon tissue using (ABIN655251 and ABIN2844850) performed on the Leica® BOND RXm. Samples were incubated with primary Antibody (1/500) for 1 hours at room temperature. A undiluted biotinylated CRF Anti-Polyvalent HRP Polymer antibody was used as the secondary antibody.



#### Immunofluorescence

**Image 2.** Confocal immunofluorescent analysis of YOD1 Antibody (C-term) (ABIN655251 and ABIN2844850) with WiDr cell followed by Alexa Fluor 488-conjugated goat anti-rabbit IgG (green). DAPI was used to stain the cell nuclear (blue).



#### Western Blotting

**Image 3.** Anti-YOD1 Antibody (C-term) at 1:2000 dilution + K562 whole cell lysate Lysates/proteins at 20 µg per lane. Secondary Goat Anti-Rabbit IgG, (H+L), Peroxidase conjugated at 1/10000 dilution. Predicted band size : 38 kDa Blocking/Dilution buffer: 5 % NFDM/TBST.

Please check the [product details page](#) for more images. Overall 4 images are available for ABIN655251.