



[Go to Product page](#)

Datasheet for ABIN655253
anti-MTHFD2L antibody (C-Term)

1 Image

Overview

Quantity:	400 µL
Target:	MTHFD2L
Binding Specificity:	AA 274-302, C-Term
Reactivity:	Human
Host:	Rabbit
Clonality:	Polyclonal
Conjugate:	This MTHFD2L antibody is un-conjugated
Application:	Western Blotting (WB)

Product Details

Immunogen:	This MTHFD2L antibody is generated from rabbits immunized with a KLH conjugated synthetic peptide between 274-302 amino acids from the C-terminal region of human MTHFD2L.
Clone:	RB29117
Isotype:	Ig Fraction
Purification:	This antibody is purified through a protein A column, followed by peptide affinity purification.

Target Details

Target:	MTHFD2L
Alternative Name:	MTHFD2L (MTHFD2L Products)
Molecular Weight:	37315

Target Details

Gene ID: 441024

NCBI Accession: [NP_001138450](#)

UniProt: [Q9H903](#)

Application Details

Application Notes: WB: 1:1000

Restrictions: For Research Use only

Handling

Format: Liquid

Buffer: Purified polyclonal antibody supplied in PBS with 0.09 % (W/V) sodium azide.

Preservative: Sodium azide

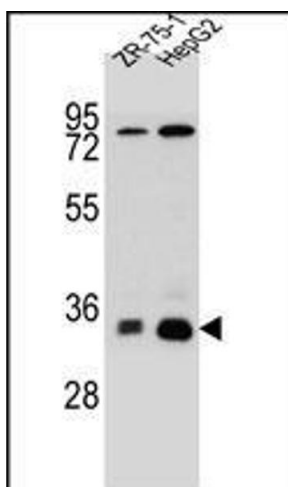
Precaution of Use: This product contains Sodium azide: a POISONOUS AND HAZARDOUS SUBSTANCE which should be handled by trained staff only.

Storage: 4 °C, -20 °C

Storage Comment: Maintain refrigerated at 2-8 °C for up to 6 months. For long term storage store at -20 °C in small aliquots to prevent freeze-thaw cycles.

Expiry Date: 6 months

Images



Western Blotting

Image 1. MTHFD2L Antibody (C-term) (ABIN655253 and ABIN2844851) western blot analysis in HepG2,ZR-75-1 cell line lysates (35 µg/lane). This demonstrates the MTHFD2L antibody detected the MTHFD2L protein (arrow).