



[Go to Product page](#)

Datasheet for ABIN655260

anti-CARM1 antibody (AA 346-377)

3 Images

Overview

| | |
|----------------------|---|
| Quantity: | 400 µL |
| Target: | CARM1 |
| Binding Specificity: | AA 346-377 |
| Reactivity: | Human |
| Host: | Rabbit |
| Clonality: | Polyclonal |
| Conjugate: | This CARM1 antibody is un-conjugated |
| Application: | Western Blotting (WB), Flow Cytometry (FACS), Immunohistochemistry (Paraffin-embedded Sections) (IHC (p)) |

Product Details

| | |
|-----------------------|---|
| Immunogen: | This PRMT4 antibody is generated from rabbits immunized with a KLH conjugated synthetic peptide between 346-377 amino acids from the Central region of human PRMT4. |
| Clone: | RB09614 |
| Isotype: | Ig Fraction |
| Predicted Reactivity: | M, Rat |
| Purification: | This antibody is purified through a protein A column, followed by peptide affinity purification. |

Target Details

| | |
|---------|-------|
| Target: | CARM1 |
|---------|-------|

Target Details

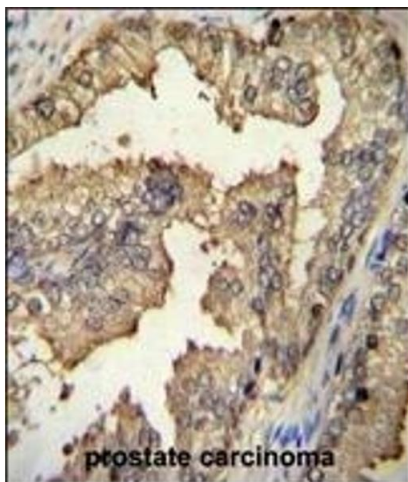
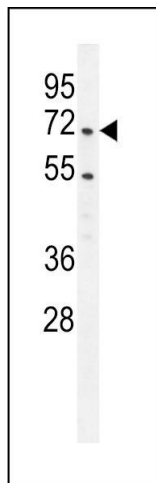
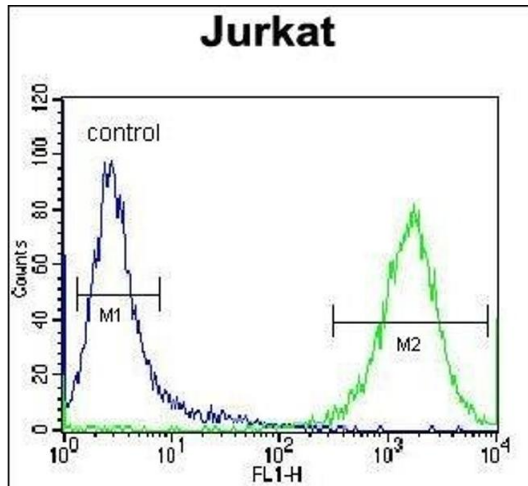
| | |
|-------------------|---|
| Alternative Name: | PRMT4 (CARM1 Products) |
| Background: | Protein arginine N-methyltransferases, such as CARM1, catalyze the transfer of a methyl group from S-adenosyl-L-methionine to the side chain nitrogens of arginine residues within proteins to form methylated arginine derivatives and S-adenosyl-L-homocysteine. Protein arginine methylation has been implicated in signal transduction, metabolism of nascent pre-RNA, and transcriptional activation (Frankel et al., 2002 [PubMed 11724789]). |
| Molecular Weight: | 65854 |
| Gene ID: | 10498 |
| NCBI Accession: | NP_954592 |
| UniProt: | Q86X55 |
| Pathways: | Intracellular Steroid Hormone Receptor Signaling Pathway , Regulation of Intracellular Steroid Hormone Receptor Signaling , Regulation of Lipid Metabolism by PPARalpha , Regulation of Muscle Cell Differentiation , Skeletal Muscle Fiber Development , Positive Regulation of fat Cell Differentiation |

Application Details

| | |
|--------------------|--|
| Application Notes: | WB: 1:1000. IHC-P: 1:50~100. FC: 1:10~50 |
| Restrictions: | For Research Use only |

Handling

| | |
|--------------------|--|
| Format: | Liquid |
| Buffer: | Purified polyclonal antibody supplied in PBS with 0.09 % (W/V) sodium azide. |
| Preservative: | Sodium azide |
| Precaution of Use: | This product contains Sodium azide: a POISONOUS AND HAZARDOUS SUBSTANCE which should be handled by trained staff only. |
| Storage: | 4 °C,-20 °C |
| Storage Comment: | Maintain refrigerated at 2-8 °C for up to 6 months. For long term storage store at -20 °C in small aliquots to prevent freeze-thaw cycles. |
| Expiry Date: | 6 months |



Flow Cytometry

Image 1. PRMT4 Antibody (Center) (ABIN655260 and ABIN2844856) flow cytometric analysis of Jurkat cells (right histogram) compared to a negative control cell (left histogram). FITC-conjugated donkey-anti-rabbit secondary antibodies were used for the analysis.

Western Blotting

Image 2. PRMT4 Antibody (Center) (ABIN655260 and ABIN2844856) western blot analysis in Jurkat cell line lysates (35 µg/lane). This demonstrates the PRMT4 antibody detected the PRMT4 protein (arrow).

Immunohistochemistry (Paraffin-embedded Sections)

Image 3. PRMT4 Antibody (Center) (ABIN655260 and ABIN2844856) immunohistochemistry analysis in formalin fixed and paraffin embedded human prostate carcinoma followed by peroxidase conjugation of the secondary antibody and DAB staining. This data demonstrates the use of PRMT4 Antibody (Center) for immunohistochemistry. Clinical relevance has not been evaluated.