

Datasheet for ABIN655265  
**anti-NR6A1 antibody (N-Term)**

## 2 Images

[Go to Product page](#)

## Overview

Quantity:	400 µL
Target:	NR6A1
Binding Specificity:	AA 30-59, N-Term
Reactivity:	Human, Mouse
Host:	Rabbit
Clonality:	Polyclonal
Conjugate:	This NR6A1 antibody is un-conjugated
Application:	Western Blotting (WB)

## Product Details

Immunogen:	This NR6A1 antibody is generated from rabbits immunized with a KLH conjugated synthetic peptide between 30-59 amino acids from the N-terminal region of human NR6A1.
Clone:	RB13458
Isotype:	Ig Fraction
Purification:	This antibody is purified through a protein A column, followed by peptide affinity purification.

## Target Details

Target:	NR6A1
Alternative Name:	NR6A1 ( <a href="#">NR6A1 Products</a> )
Background:	This gene encodes an orphan nuclear receptor which is a member of the nuclear hormone

## Target Details

receptor family. Its expression pattern suggests that it may be involved in neurogenesis and germ cell development. The protein can homodimerize and bind DNA, but in vivo targets have not been identified. The gene expresses at least alternatively spliced transcript variants.

Molecular Weight: 54383

Gene ID: 2649

NCBI Accession: [NP\\_001265475](#), [NP\\_001480](#), [NP\\_201591](#)

UniProt: [Q15406](#)

Pathways: [Nuclear Receptor Transcription Pathway](#), [Steroid Hormone Mediated Signaling Pathway](#)

## Application Details

Application Notes: WB: 1:1000. WB: 1:1000

Restrictions: For Research Use only

## Handling

Format: Liquid

Buffer: Purified polyclonal antibody supplied in PBS with 0.09 % (W/V) sodium azide.

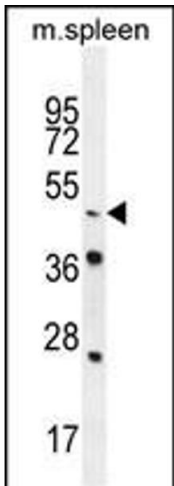
Preservative: Sodium azide

Precaution of Use: This product contains Sodium azide: a POISONOUS AND HAZARDOUS SUBSTANCE which should be handled by trained staff only.

Storage: 4 °C, -20 °C

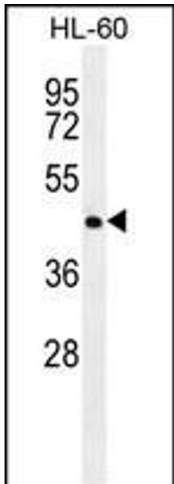
Storage Comment: Maintain refrigerated at 2-8 °C for up to 6 months. For long term storage store at -20 °C in small aliquots to prevent freeze-thaw cycles.

Expiry Date: 6 months



Western Blotting

**Image 1.** NR6A1 Antibody (N-term) (ABIN655265 and ABIN2844858) western blot analysis in mouse spleen tissue lysates (35 µg/lane). This demonstrates the NR6A1 antibody detected the NR6A1 protein (arrow).



Western Blotting

**Image 2.** NR6A1 Antibody (N-term) (ABIN655265 and ABIN2844858) western blot analysis in HL-60 cell line lysates (35 µg/lane). This demonstrates the NR6A1 antibody detected the NR6A1 protein (arrow).