

Datasheet for ABIN655266

anti-Tolloid-Like 2 antibody (AA 298-328)[Go to Product page](#)**2** Images

Overview

Quantity:	400 µL
Target:	Tolloid-Like 2 (TLL2)
Binding Specificity:	AA 298-328
Reactivity:	Human
Host:	Rabbit
Clonality:	Polyclonal
Conjugate:	This Tolloid-Like 2 antibody is un-conjugated
Application:	Immunohistochemistry (Paraffin-embedded Sections) (IHC (p)), Western Blotting (WB)

Product Details

Immunogen:	This TLL2 antibody is generated from rabbits immunized with a KLH conjugated synthetic peptide between 298-328 amino acids from the Central region of human TLL2.
Clone:	RB14606
Isotype:	Ig Fraction
Purification:	This antibody is prepared by Saturated Ammonium Sulfate (SAS) precipitation followed by dialysis against PBS.

Target Details

Target:	Tolloid-Like 2 (TLL2)
Alternative Name:	TLL2 (TLL2 Products)

Target Details

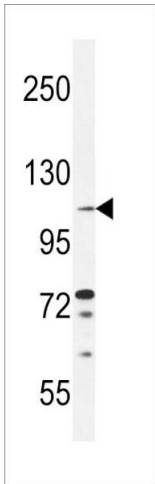
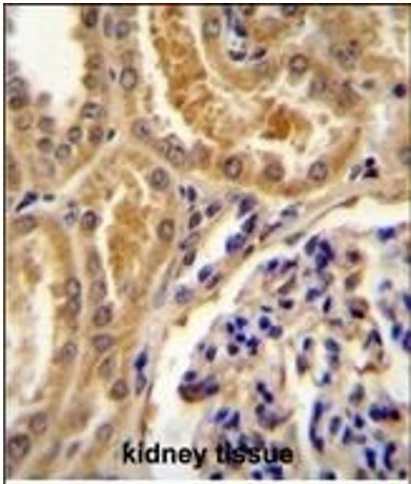
Background:	This gene encodes an astacin-like zinc-dependent metalloprotease and is a subfamily member of the metzincin family. Unlike other family members, a similar protein in mice does not cleave procollagen C-propeptides or chordin.
Molecular Weight:	113557
Gene ID:	7093
NCBI Accession:	NP_036597
UniProt:	Q9Y6L7

Application Details

Application Notes:	WB: 1:1000. IHC-P: 1:50~100
Restrictions:	For Research Use only

Handling

Format:	Liquid
Buffer:	Purified polyclonal antibody supplied in PBS with 0.09 % (W/V) sodium azide.
Preservative:	Sodium azide
Precaution of Use:	This product contains Sodium azide: a POISONOUS AND HAZARDOUS SUBSTANCE which should be handled by trained staff only.
Storage:	4 °C, -20 °C
Storage Comment:	Maintain refrigerated at 2-8 °C for up to 6 months. For long term storage store at -20 °C in small aliquots to prevent freeze-thaw cycles.
Expiry Date:	6 months



Immunohistochemistry (Paraffin-embedded Sections)

Image 1. TLL2 Antibody (Center) (ABIN655266 and ABIN2844859) immunohistochemistry analysis in formalin fixed and paraffin embedded human kidney tissue followed by peroxidase conjugation of the secondary antibody and DAB staining. This data demonstrates the use of TLL2 Antibody (Center) for immunohistochemistry. Clinical relevance has not been evaluated.

Western Blotting

Image 2. TLL2 Antibody (Center) (ABIN655266 and ABIN2844859) western blot analysis in ZR-75-1 cell line lysates (35 µg/lane). This demonstrates the TLL2 antibody detected the TLL2 protein (arrow).