

Datasheet for ABIN655267  
**anti-ARL5B antibody (C-Term)**

## 3 Images

[Go to Product page](#)

## Overview

Quantity:	400 µL
Target:	ARL5B
Binding Specificity:	AA 122-154, C-Term
Reactivity:	Human
Host:	Rabbit
Clonality:	Polyclonal
Conjugate:	This ARL5B antibody is un-conjugated
Application:	Western Blotting (WB), Flow Cytometry (FACS), Immunohistochemistry (Paraffin-embedded Sections) (IHC (p))

## Product Details

Immunogen:	This ARL8 antibody is generated from rabbits immunized with a KLH conjugated synthetic peptide between 122-154 amino acids from the C-terminal region of human ARL8.
Clone:	RB14674
Isotype:	Ig Fraction
Predicted Reactivity:	M
Purification:	This antibody is prepared by Saturated Ammonium Sulfate (SAS) precipitation followed by dialysis against PBS.

## Target Details

Target:	ARL5B
---------	-------

## Target Details

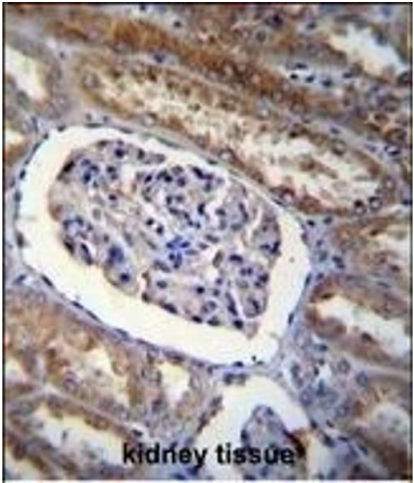
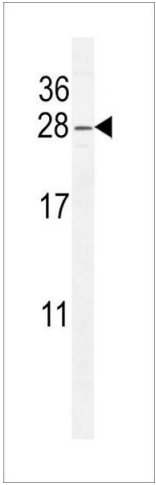
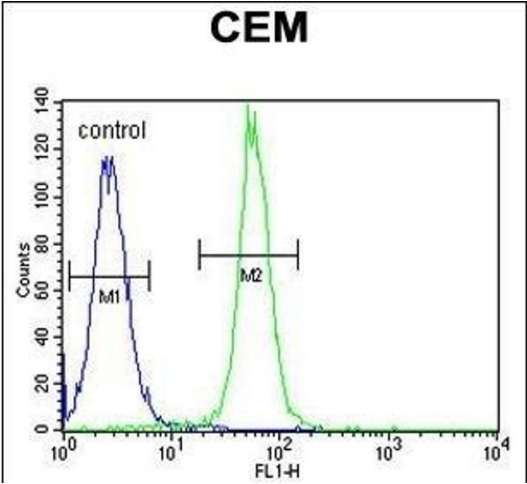
Alternative Name:	ARL8 ( <a href="#">ARL5B Products</a> )
Background:	ARL5B (ARL8) belongs to a family of proteins that are structurally similar to ADP-ribosylation factors (ARFs, see MIM 103180). ARLs and ARFs are part of the RAS superfamily of regulatory GTPases.
Molecular Weight:	20375
Gene ID:	221079
NCBI Accession:	<a href="#">NP_848930</a>
UniProt:	<a href="#">Q96KC2</a>

## Application Details

Application Notes:	WB: 1:1000. IHC-P: 1:50~100. FC: 1:10~50
Restrictions:	For Research Use only

## Handling

Format:	Liquid
Buffer:	Purified polyclonal antibody supplied in PBS with 0.09 % (W/V) sodium azide.
Preservative:	Sodium azide
Precaution of Use:	This product contains Sodium azide: a POISONOUS AND HAZARDOUS SUBSTANCE which should be handled by trained staff only.
Storage:	4 °C,-20 °C
Storage Comment:	Maintain refrigerated at 2-8 °C for up to 6 months. For long term storage store at -20 °C in small aliquots to prevent freeze-thaw cycles.
Expiry Date:	6 months



### Flow Cytometry

**Image 1.** ARL8 Antibody (C-term) (ABIN655267 and ABIN2844860) flow cytometric analysis of CEM cells (right histogram) compared to a negative control cell (left histogram). FITC-conjugated goat-anti-rabbit secondary antibodies were used for the analysis.

### Western Blotting

**Image 2.** ARL8 Antibody (C-term) (ABIN655267 and ABIN2844860) western blot analysis in CEM cell line lysates (35 µg/lane). This demonstrates the ARL8 antibody detected the ARL8 protein (arrow).

### Immunohistochemistry (Paraffin-embedded Sections)

**Image 3.** ARL8 Antibody (C-term) (ABIN655267 and ABIN2844860) immunohistochemistry analysis in formalin fixed and paraffin embedded human kidney tissue followed by peroxidase conjugation of the secondary antibody and DAB staining. This data demonstrates the use of ARL8 Antibody (C-term) for immunohistochemistry. Clinical relevance has not been evaluated.