

Datasheet for ABIN655272

anti-CYP1A2 antibody (AA 255-282)**3** Images**2** Publications[Go to Product page](#)

Overview

Quantity:	400 µL
Target:	CYP1A2
Binding Specificity:	AA 255-282
Reactivity:	Human, Mouse
Host:	Rabbit
Clonality:	Polyclonal
Conjugate:	This CYP1A2 antibody is un-conjugated
Application:	Western Blotting (WB), Immunofluorescence (IF), Immunohistochemistry (Paraffin-embedded Sections) (IHC (p))

Product Details

Immunogen:	This CYP1A2 antibody is generated from rabbits immunized with a KLH conjugated synthetic peptide between 255-282 amino acids from the Central region of human CYP1A2.
Clone:	RB16939
Isotype:	Ig Fraction
Purification:	This antibody is purified through a protein A column, followed by peptide affinity purification.

Target Details

Target:	CYP1A2
Alternative Name:	CYP1A2 (CYP1A2 Products)

Target Details

Background: This gene encodes a member of the cytochrome P450 superfamily of enzymes. The cytochrome P450 proteins are monooxygenases which catalyze many reactions involved in drug metabolism and synthesis of cholesterol, steroids and other lipids. The protein encoded by this gene localizes to the endoplasmic reticulum and its expression is induced by some polycyclic aromatic hydrocarbons (PAHs), some of which are found in cigarette smoke. The enzyme's endogenous substrate is unknown, however, it is able to metabolize some PAHs to carcinogenic intermediates. Other xenobiotic substrates for this enzyme include caffeine, aflatoxin B1, and acetaminophen. The transcript from this gene contains four Alu sequences flanked by direct repeats in the 3' untranslated region.

Molecular Weight: 58407

Gene ID: 1544

NCBI Accession: [NP_000752](#)

UniProt: [P05177](#)

Application Details

Application Notes: IF: 1:10~50. WB: 1:1000. IHC-P: 1:10~50

Restrictions: For Research Use only

Handling

Format: Liquid

Buffer: Purified polyclonal antibody supplied in PBS with 0.09 % (W/V) sodium azide.

Preservative: Sodium azide

Precaution of Use: This product contains Sodium azide: a POISONOUS AND HAZARDOUS SUBSTANCE which should be handled by trained staff only.

Storage: 4 °C, -20 °C

Storage Comment: Maintain refrigerated at 2-8 °C for up to 6 months. For long term storage store at -20 °C in small aliquots to prevent freeze-thaw cycles.

Expiry Date: 6 months

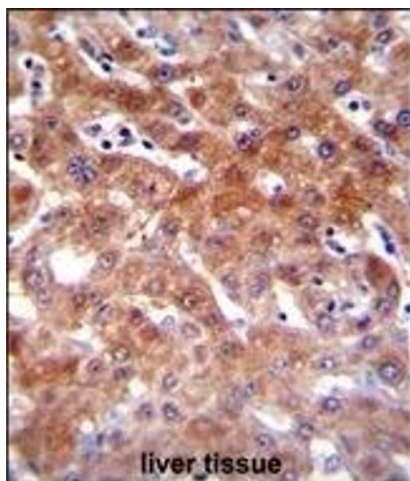
Publications

Product cited in: Sriwattanapong, Slocum, Chawanthayatham, Fedeles, Egner, Groopman, Satayavivad, Croy,

Essigmann: "Editor's Highlight: Pregnancy Alters Aflatoxin B1 Metabolism and Increases DNA Damage in Mouse Liver." in: **Toxicological sciences : an official journal of the Society of Toxicology**, Vol. 160, Issue 1, pp. 173-179, (2018) ([PubMed](#)).

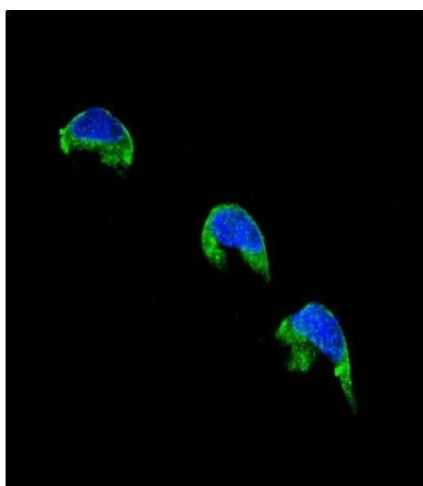
Okamatsu, Kawakami, Komatsu, Kitazawa, Uno, Teraoka: "Functional expression and comparative characterization of four feline P450 cytochromes using fluorescent substrates." in: **Xenobiotica; the fate of foreign compounds in biological systems**, Vol. 47, Issue 11, pp. 951-961, (2017) ([PubMed](#)).

Images



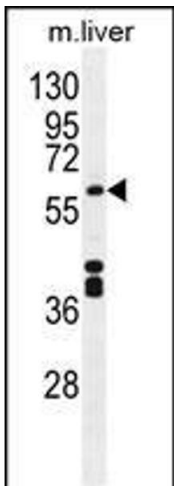
Immunohistochemistry (Paraffin-embedded Sections)

Image 1. CYP1A2 Antibody (Center) (ABIN655272 and ABIN2844864) immunohistochemistry analysis in formalin fixed and paraffin embedded human liver tissue followed by peroxidase conjugation of the secondary antibody and DAB staining. This data demonstrates the use of CYP1A2 Antibody (Center) for immunohistochemistry. Clinical relevance has not been evaluated.



Immunofluorescence

Image 2. Confocal immunofluorescent analysis of CYP1A2 Antibody (Center) (ABIN655272 and ABIN2844864) with 293 cell followed by Alexa Fluor® 488-conjugated goat anti-rabbit IgG (green). DAPI was used to stain the cell nuclear (blue).



Western Blotting

Image 3. CYP1A2 Antibody (Center) (ABIN655272 and ABIN2844864) western blot analysis in mouse liver tissue lysates (35 µg/lane). This demonstrates the CYP1A2 antibody detected the CYP1A2 protein (arrow).