

Datasheet for ABIN655274
anti-CPA6 antibody (AA 285-315)[Go to Product page](#)

1 Image

Overview

Quantity:	400 µL
Target:	CPA6
Binding Specificity:	AA 285-315
Reactivity:	Human
Host:	Rabbit
Clonality:	Polyclonal
Conjugate:	This CPA6 antibody is un-conjugated
Application:	Western Blotting (WB)

Product Details

Immunogen:	This CPA6 antibody is generated from rabbits immunized with a KLH conjugated synthetic peptide between 285-315 amino acids from the Central region of human CPA6.
Clone:	RB19012
Isotype:	Ig Fraction
Predicted Reactivity:	M
Purification:	This antibody is purified through a protein A column, followed by peptide affinity purification.

Target Details

Target:	CPA6
Alternative Name:	CPA6 (CPA6 Products)

Target Details

Background: The protein encoded by this gene belongs to the family of carboxypeptidases, which catalyze the release of C-terminal amino acid, and have functions ranging from digestion of food to selective biosynthesis of neuroendocrine peptides. Polymorphic variants and a reciprocal translocation t(6,8)(q26,q13) involving this gene, have been associated with Duane retraction syndrome.

Molecular Weight: 51008

Gene ID: 57094

NCBI Accession: [NP_065094](#)

UniProt: [Q8N4T0](#)

Application Details

Application Notes: WB: 1:1000

Restrictions: For Research Use only

Handling

Format: Liquid

Buffer: Purified polyclonal antibody supplied in PBS with 0.09 % (W/V) sodium azide.

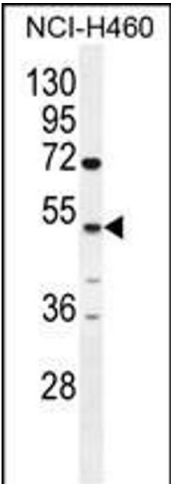
Preservative: Sodium azide

Precaution of Use: This product contains Sodium azide: a POISONOUS AND HAZARDOUS SUBSTANCE which should be handled by trained staff only.

Storage: 4 °C,-20 °C

Storage Comment: Maintain refrigerated at 2-8 °C for up to 6 months. For long term storage store at -20 °C in small aliquots to prevent freeze-thaw cycles.

Expiry Date: 6 months



Western Blotting

Image 1. C Antibody (Center) (ABIN655274 and ABIN2844866) western blot analysis in NCI- cell line lysates (35 µg/lane).This demonstrates the C antibody detected the C protein (arrow).