

Datasheet for ABIN655275  
**anti-RFWD2 antibody (N-Term)**

2 Images



[Go to Product page](#)

## Overview

Quantity:	400 µL
Target:	RFWD2
Binding Specificity:	AA 37-65, N-Term
Reactivity:	Human
Host:	Rabbit
Clonality:	Polyclonal
Conjugate:	This RFWD2 antibody is un-conjugated
Application:	Western Blotting (WB), Flow Cytometry (FACS)

## Product Details

Immunogen:	This COP1 antibody is generated from rabbits immunized with a KLH conjugated synthetic peptide between 37-65 amino acids from the N-terminal region of human COP1.
Clone:	RB19572
Isotype:	Ig Fraction
Purification:	This antibody is purified through a protein A column, followed by peptide affinity purification.

## Target Details

Target:	RFWD2
Alternative Name:	COP1 ( <a href="#">RFWD2 Products</a> )
Background:	Caspase inhibitor. Acts as a regulator of procaspase-1/CASP1 activation implicated in the

## Target Details

---

regulation of the proteolytic maturation of pro-interleukin-1 beta (IL1B) and its release during inflammation. Inhibits the release of IL1B in response to LPS in monocytes. Also induces NF-kappa-B activation during the pro-inflammatory cytokine response. Also able to inhibit CASP1-mediated neuronal cell death, TNF-alpha, hypoxia-, UV-, and staurosporine-mediated cell death but not ER stress-mediated cell death. Acts by preventing activation of caspases CASP1 and CASP4, possibly by preventing the interaction between CASP1 and RIPK2.

Molecular Weight:	22625
Gene ID:	114769
NCBI Accession:	<a href="#">NP_001017534</a> , <a href="#">NP_443121</a>
UniProt:	<a href="#">Q5EG05</a>
Pathways:	<a href="#">Photoperiodism</a>

## Application Details

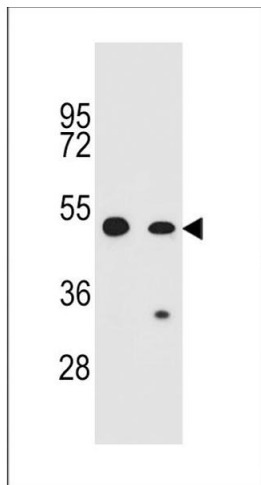
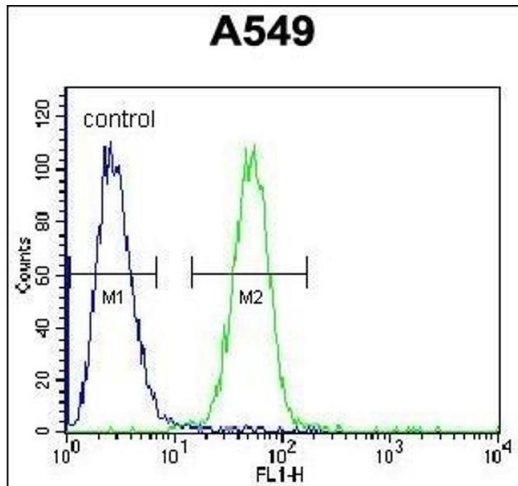
---

Application Notes:	WB: 1:1000. FC: 1:10~50
Restrictions:	For Research Use only

## Handling

---

Format:	Liquid
Buffer:	Purified polyclonal antibody supplied in PBS with 0.09 % (W/V) sodium azide.
Preservative:	Sodium azide
Precaution of Use:	This product contains Sodium azide: a POISONOUS AND HAZARDOUS SUBSTANCE which should be handled by trained staff only.
Storage:	4 °C,-20 °C
Storage Comment:	Maintain refrigerated at 2-8 °C for up to 6 months. For long term storage store at -20 °C in small aliquots to prevent freeze-thaw cycles.
Expiry Date:	6 months



### Flow Cytometry

**Image 1.** COP1 Antibody (N-term) (ABIN655275 and ABIN2844867) flow cytometric analysis of A549 cells (right histogram) compared to a negative control cell (left histogram). FITC-conjugated goat-anti-rabbit secondary antibodies were used for the analysis.

### Western Blotting

**Image 2.** COP1 Antibody (N-term) (ABIN655275 and ABIN2844867) western blot analysis in CEM, A549 cell line lysates (35 µg/lane). This demonstrates the COP1 antibody detected the COP1 protein (arrow).