

Datasheet for ABIN655276  
**anti-COPE antibody (C-Term)**[Go to Product page](#)

## 3 Images

## Overview

Quantity:	400 µL
Target:	COPE
Binding Specificity:	AA 273-300, C-Term
Reactivity:	Human
Host:	Rabbit
Clonality:	Polyclonal
Conjugate:	This COPE antibody is un-conjugated
Application:	Western Blotting (WB), Immunofluorescence (IF), Immunohistochemistry (Paraffin-embedded Sections) (IHC (p))

## Product Details

Immunogen:	This COPE antibody is generated from rabbits immunized with a KLH conjugated synthetic peptide between 273-300 amino acids from the C-terminal region of human COPE.
Clone:	RB19580
Isotype:	Ig Fraction
Predicted Reactivity:	C, Ha, M
Purification:	This antibody is purified through a protein A column, followed by peptide affinity purification.

## Target Details

Target:	COPE
---------	------

## Target Details

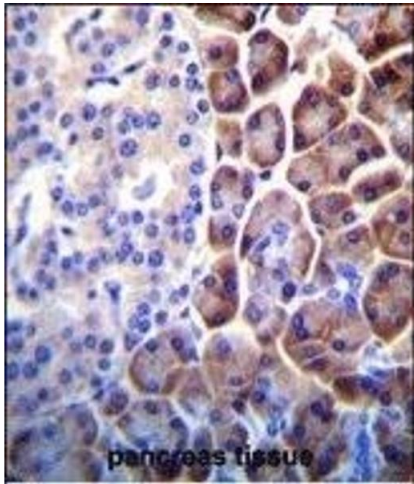
Alternative Name:	COPE ( <a href="#">COPE Products</a> )
Background:	The product of this gene is an epsilon subunit of coatomer protein complex. Coatomer is a cytosolic protein complex that binds to dilysine motifs and reversibly associates with Golgi non-clathrin-coated vesicles. It is required for budding from Golgi membranes, and is essential for the retrograde Golgi-to-ER transport of dilysine-tagged proteins. Coatomer complex consists of at least the alpha, beta, beta', gamma, delta, epsilon and zeta subunits. Alternatively spliced transcript variants encoding different isoforms have been identified.
Molecular Weight:	34482
Gene ID:	11316
NCBI Accession:	<a href="#">NP_009194</a> , <a href="#">NP_955474</a> , <a href="#">NP_955476</a>
UniProt:	<a href="#">O14579</a>

## Application Details

Application Notes:	IF: 1:10~50. WB: 1:1000. IHC-P: 1:10~50
Restrictions:	For Research Use only

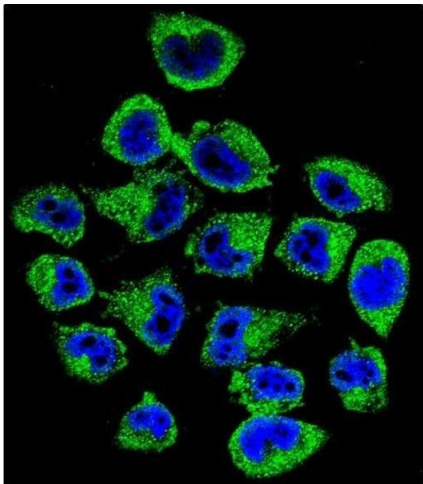
## Handling

Format:	Liquid
Buffer:	Purified polyclonal antibody supplied in PBS with 0.09 % (W/V) sodium azide.
Preservative:	Sodium azide
Precaution of Use:	This product contains Sodium azide: a POISONOUS AND HAZARDOUS SUBSTANCE which should be handled by trained staff only.
Storage:	4 °C,-20 °C
Storage Comment:	Maintain refrigerated at 2-8 °C for up to 6 months. For long term storage store at -20 °C in small aliquots to prevent freeze-thaw cycles.
Expiry Date:	6 months



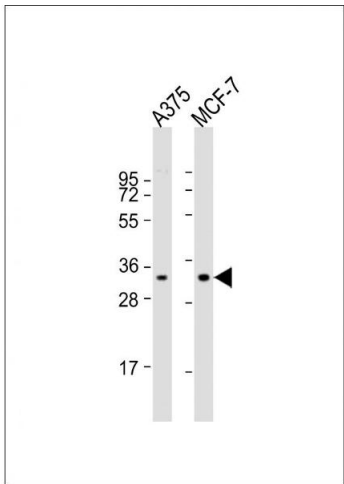
Immunohistochemistry (Paraffin-embedded Sections)

**Image 1.** COPE Antibody (C-term) (ABIN655276 and ABIN2844868) immunohistochemistry analysis in formalin fixed and paraffin embedded human pancreas tissue followed by peroxidase conjugation of the secondary antibody and DAB staining. This data demonstrates the use of COPE Antibody (C-term) for immunohistochemistry. Clinical relevance has not been evaluated.



Immunofluorescence

**Image 2.** Confocal immunofluorescent analysis of COPE Antibody (C-term) (ABIN655276 and ABIN2844868) with cell followed by Alexa Fluor 488-conjugated goat anti-rabbit IgG (green). DAPI was used to stain the cell nuclear (blue).



Western Blotting

**Image 3.** All lanes : Anti-COPE Antibody (C-term) at 1:1000 dilution Lane 1: whole cell lysate Lane 2: MCF-7 whole cell lysate Lysates/proteins at 20 µg per lane. Secondary Goat Anti-Rabbit IgG, (H+L), Peroxidase conjugated at 1/10000 dilution. Predicted band size : 34 kDa Blocking/Dilution buffer: 5 % NFDM/TBST.