



[Go to Product page](#)

Datasheet for ABIN655280

anti-Keratin 33A antibody (N-Term)

1 Image

Overview

Quantity:	400 µL
Target:	Keratin 33A (KRT33A)
Binding Specificity:	AA 56-85, N-Term
Reactivity:	Mouse
Host:	Rabbit
Clonality:	Polyclonal
Conjugate:	This Keratin 33A antibody is un-conjugated
Application:	Western Blotting (WB)

Product Details

Immunogen:	This KT33A antibody is generated from rabbits immunized with a KLH conjugated synthetic peptide between 56-85 amino acids from the N-terminal region of human KT33A.
Clone:	RB22295
Isotype:	Ig Fraction
Predicted Reactivity:	H
Purification:	This antibody is purified through a protein A column, followed by peptide affinity purification.

Target Details

Target:	Keratin 33A (KRT33A)
Alternative Name:	KT33A (KRT33A Products)

Target Details

Background: The protein encoded by this gene is a member of the keratin gene family. It is one of the type I hair keratin genes which are clustered in a region of chromosome 17q12-q21 and have the same direction of transcription. As a type I hair keratin, it is an acidic protein which heterodimerizes with type II keratins to form hair and nails. There are two isoforms of this protein, encoded by two separate genes, KRTHA3A and KRTHA3B. [provided by RefSeq].

Molecular Weight: 45940

Gene ID: 3883

NCBI Accession: [NP_004129](#)

UniProt: [O76009](#)

Application Details

Application Notes: WB: 1:1000

Restrictions: For Research Use only

Handling

Format: Liquid

Buffer: Purified polyclonal antibody supplied in PBS with 0.09 % (W/V) sodium azide.

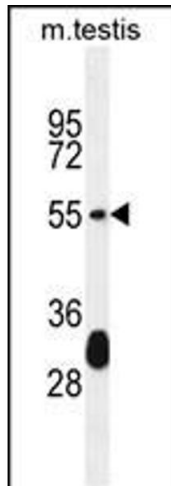
Preservative: Sodium azide

Precaution of Use: This product contains Sodium azide: a POISONOUS AND HAZARDOUS SUBSTANCE which should be handled by trained staff only.

Storage: 4 °C,-20 °C

Storage Comment: Maintain refrigerated at 2-8 °C for up to 6 months. For long term storage store at -20 °C in small aliquots to prevent freeze-thaw cycles.

Expiry Date: 6 months



Western Blotting

Image 1. KT33A Antibody (N-term) (ABIN655280 and ABIN2844872) western blot analysis in mouse testis tissue lysates (35 µg/lane). This demonstrates the KT33A antibody detected the KT33A protein (arrow).