



[Go to Product page](#)

Datasheet for ABIN655281
anti-RPS6KL1 antibody

2 Images

Overview

Quantity:	400 µL
Target:	RPS6KL1
Reactivity:	Human
Host:	Rabbit
Clonality:	Polyclonal
Conjugate:	This RPS6KL1 antibody is un-conjugated
Application:	Western Blotting (WB)

Product Details

Immunogen:	This RPS6KL1 antibody is generated from rabbits immunized with a recombinant protein of human RPS6KL1.
Clone:	RB22939
Isotype:	Ig Fraction
Purification:	This antibody is purified through a protein A column, followed by peptide affinity purification.

Target Details

Target:	RPS6KL1
Alternative Name:	RPS6KL1 (RPS6KL1 Products)
Molecular Weight:	60036
Gene ID:	83694

Target Details

NCBI Accession: [NP_113652](#)

UniProt: [Q9Y6S9](#)

Application Details

Application Notes: WB: 1:1000. WB: 1:1000

Restrictions: For Research Use only

Handling

Format: Liquid

Buffer: Purified polyclonal antibody supplied in PBS with 0.09 % (W/V) sodium azide.

Preservative: Sodium azide

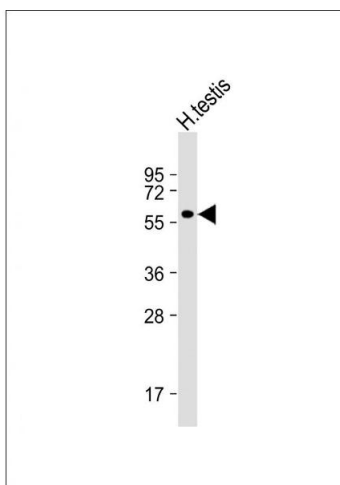
Precaution of Use: This product contains Sodium azide: a POISONOUS AND HAZARDOUS SUBSTANCE which should be handled by trained staff only.

Storage: 4 °C, -20 °C

Storage Comment: Maintain refrigerated at 2-8 °C for up to 6 months. For long term storage store at -20 °C in small aliquots to prevent freeze-thaw cycles.

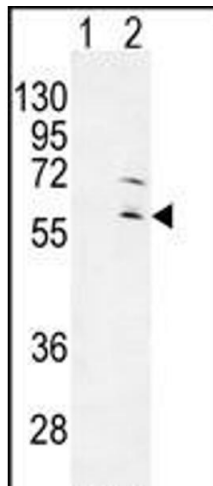
Expiry Date: 6 months

Images



Western Blotting

Image 1. Anti-RPS6KL1 Antibody at 1:1000 dilution + H. testis whole cell lysate Lysates/proteins at 20 µg per lane. Secondary Goat Anti-Rabbit IgG, (H+L), Peroxidase conjugated at 1/10000 dilution. Predicted band size : 60 kDa
Blocking/Dilution buffer: 5 % NFDN/TBST.



Western Blotting

Image 2. Western blot analysis of RPS6KL1 (arrow) using rabbit polyclonal RPS6KL1 Antibody (ABIN655281 and ABIN2844873). 293 cell lysates (2 µg/lane) either nontransfected (Lane 1) or transiently transfected (Lane 2) with the RPS6KL1 gene.