

Datasheet for ABIN655284

**anti-FOXD4L1 antibody (N-Term)****2** Images[Go to Product page](#)

## Overview

Quantity:	400 µL
Target:	FOXD4L1
Binding Specificity:	AA 1-30, N-Term
Reactivity:	Human
Host:	Rabbit
Clonality:	Polyclonal
Conjugate:	This FOXD4L1 antibody is un-conjugated
Application:	Western Blotting (WB), Flow Cytometry (FACS)

## Product Details

Immunogen:	This FX4L1 antibody is generated from rabbits immunized with a KLH conjugated synthetic peptide between 1-30 amino acids from the N-terminal region of human FX4L1.
Clone:	RB28484
Isotype:	Ig Fraction
Purification:	This antibody is purified through a protein A column, followed by peptide affinity purification.

## Target Details

Target:	FOXD4L1
Alternative Name:	FX4L1 ( <a href="#">FOXD4L1 Products</a> )
Background:	This gene is a member of the forkhead/winged-helix (FOX) family of transcription factors with

## Target Details

highly conserved FOX DNA-binding domains. Members of the FOX family of transcription factors are regulators of embryogenesis and may play a role in human cancer. This gene lies in a region of chromosome 2 that surrounds the site where two ancestral chromosomes fused to form human chromosome 2. This region is duplicated elsewhere in the human genome, primarily in subtelomeric and pericentromeric locations, thus multiple copies of this gene have been found.

Gene ID: 200350

NCBI Accession: [NP\\_036316](#)

UniProt: [Q9NU39](#)

## Application Details

Application Notes: WB: 1:1000. FC: 1:10~50

Restrictions: For Research Use only

## Handling

Format: Liquid

Buffer: Purified polyclonal antibody supplied in PBS with 0.09 % (W/V) sodium azide.

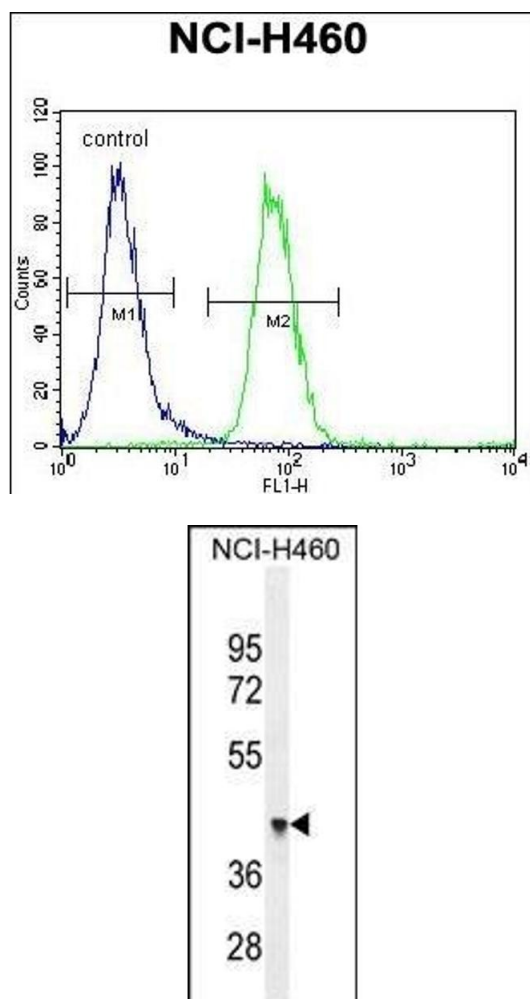
Preservative: Sodium azide

Precaution of Use: This product contains Sodium azide: a POISONOUS AND HAZARDOUS SUBSTANCE which should be handled by trained staff only.

Storage: 4 °C,-20 °C

Storage Comment: Maintain refrigerated at 2-8 °C for up to 6 months. For long term storage store at -20 °C in small aliquots to prevent freeze-thaw cycles.

Expiry Date: 6 months



### Flow Cytometry

**Image 1.** FX4L1 Antibody (N-term) (ABIN655284 and ABIN2844875) flow cytometric analysis of NCI- cells (right histogram) compared to a negative control cell (left histogram). FITC-conjugated goat-anti-rabbit secondary antibodies were used for the analysis.

### Western Blotting

**Image 2.** FX4L1 Antibody (N-term) (ABIN655284 and ABIN2844875) western blot analysis in NCI- cell line lysates (35 µg/lane). This demonstrates the FX4L1 antibody detected the FX4L1 protein (arrow).