

Datasheet for ABIN655287

**anti-Selenoprotein V antibody (C-Term)**

## 4 Images

[Go to Product page](#)

## Overview

Quantity:	400 µL
Target:	Selenoprotein V (SELV)
Binding Specificity:	AA 296-324, C-Term
Reactivity:	Human
Host:	Rabbit
Clonality:	Polyclonal
Conjugate:	This Selenoprotein V antibody is un-conjugated
Application:	Western Blotting (WB), Flow Cytometry (FACS), Immunofluorescence (IF), Immunohistochemistry (Paraffin-embedded Sections) (IHC (p))

## Product Details

Immunogen:	This SELV antibody is generated from rabbits immunized with a KLH conjugated synthetic peptide between 296-324 amino acids from the C-terminal region of human SELV.
Clone:	RB28806
Isotype:	Ig Fraction
Purification:	This antibody is purified through a protein A column, followed by peptide affinity purification.

## Target Details

Target:	Selenoprotein V (SELV)
Alternative Name:	SELV ( <a href="#">SELV Products</a> )

## Target Details

**Background:** This gene encodes a selenoprotein, which contains a selenocysteine (Sec) residue at its active site. The selenocysteine is encoded by the UGA codon that normally signals translation termination. The 3' UTR of selenoprotein genes have a common stem-loop structure, the sec insertion sequence (SECIS), that is necessary for the recognition of UGA as a Sec codon rather than as a stop signal.

**Molecular Weight:** 36800

**Gene ID:** 348303

**NCBI Accession:** [NP\\_874363](#)

**UniProt:** [P59797](#)

## Application Details

**Application Notes:** IF: 1:10~50. WB: 1:1000. IHC-P: 1:50~100. FC: 1:10~50

**Restrictions:** For Research Use only

## Handling

**Format:** Liquid

**Buffer:** Purified polyclonal antibody supplied in PBS with 0.09 % (W/V) sodium azide.

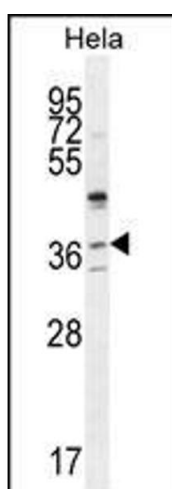
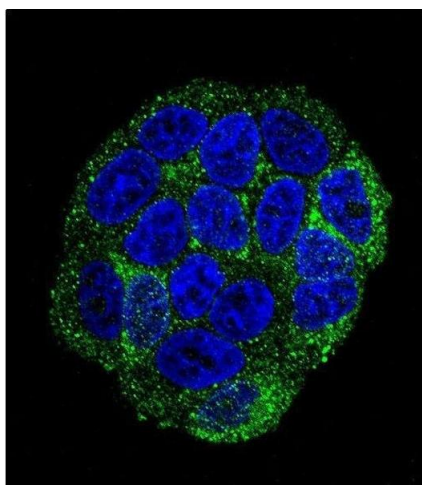
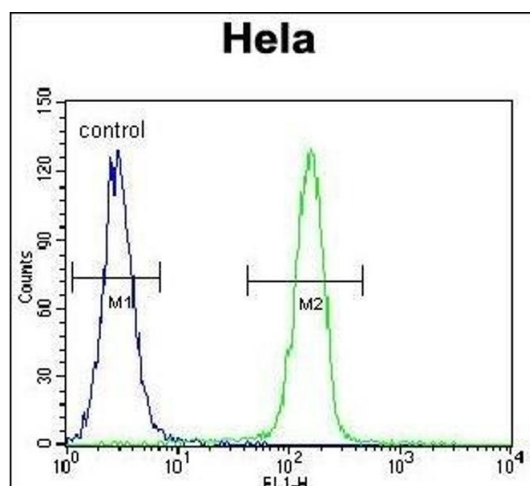
**Preservative:** Sodium azide

**Precaution of Use:** This product contains Sodium azide: a POISONOUS AND HAZARDOUS SUBSTANCE which should be handled by trained staff only.

**Storage:** 4 °C,-20 °C

**Storage Comment:** Maintain refrigerated at 2-8 °C for up to 6 months. For long term storage store at -20 °C in small aliquots to prevent freeze-thaw cycles.

**Expiry Date:** 6 months



### Flow Cytometry

**Image 1.** SELV Antibody (C-term) (ABIN655287 and ABIN2844877) flow cytometric analysis of Hela cells (right histogram) compared to a negative control cell (left histogram). FITC-conjugated goat-anti-rabbit secondary antibodies were used for the analysis.

### Immunofluorescence

**Image 2.** Confocal immunofluorescent analysis of SELV Antibody (C-term) (ABIN655287 and ABIN2844877) with Hela cell followed by Alexa Fluor 488-conjugated goat anti-rabbit IgG (green). DAPI was used to stain the cell nuclear (blue).

### Western Blotting

**Image 3.** SELV Antibody (C-term) (ABIN655287 and ABIN2844877) western blot analysis in Hela cell line lysates (35  $\mu$ g/lane). This demonstrates the SELV antibody detected the SELV protein (arrow).

Please check the [product details page](#) for more images. Overall 4 images are available for ABIN655287.