

Datasheet for ABIN655297
anti-LRTM2 antibody (C-Term)[Go to Product page](#)

3 Images

Overview

Quantity:	400 µL
Target:	LRTM2
Binding Specificity:	AA 339-367, C-Term
Reactivity:	Human
Host:	Rabbit
Clonality:	Polyclonal
Conjugate:	This LRTM2 antibody is un-conjugated
Application:	Western Blotting (WB), Immunofluorescence (IF), Immunohistochemistry (Paraffin-embedded Sections) (IHC (p))

Product Details

Immunogen:	This LRTM2 antibody is generated from rabbits immunized with a KLH conjugated synthetic peptide between 339-367 amino acids from the C-terminal region of human LRTM2.
Clone:	RB29025
Isotype:	Ig Fraction
Predicted Reactivity:	M
Purification:	This antibody is purified through a protein A column, followed by peptide affinity purification.

Target Details

Target:	LRTM2
---------	-------

Target Details

Alternative Name:	LRTM2 (LRTM2 Products)
Gene ID:	654429
NCBI Accession:	NP_001034118 , NP_001157397 , NP_001157398
UniProt:	Q8N967

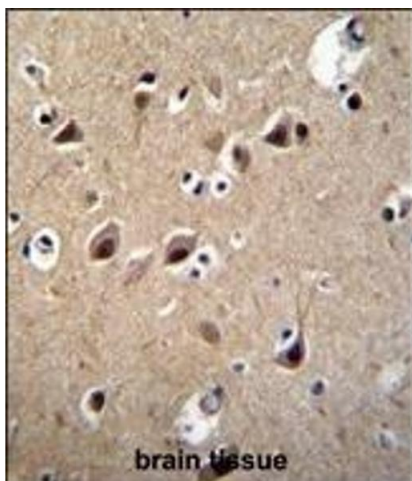
Application Details

Application Notes:	IF: 1:10~50. WB: 1:1000. IHC-P: 1:50~100
Restrictions:	For Research Use only

Handling

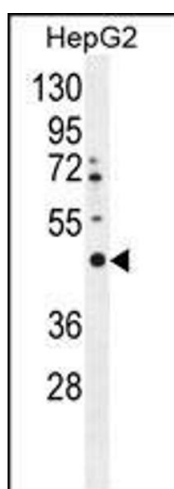
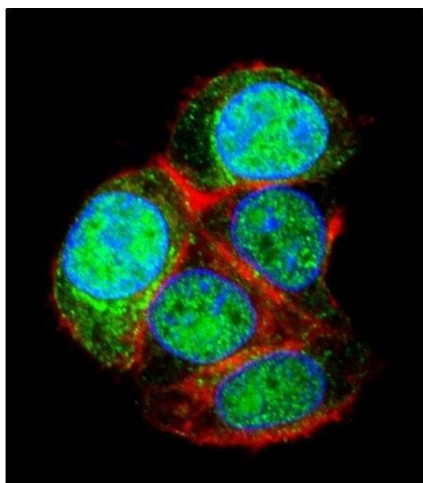
Format:	Liquid
Buffer:	Purified polyclonal antibody supplied in PBS with 0.09 % (W/V) sodium azide.
Preservative:	Sodium azide
Precaution of Use:	This product contains Sodium azide: a POISONOUS AND HAZARDOUS SUBSTANCE which should be handled by trained staff only.
Storage:	4 °C, -20 °C
Storage Comment:	Maintain refrigerated at 2-8 °C for up to 6 months. For long term storage store at -20 °C in small aliquots to prevent freeze-thaw cycles.
Expiry Date:	6 months

Images



Immunohistochemistry (Paraffin-embedded Sections)

Image 1. LRTM2 Antibody (C-term) (ABIN655297 and ABIN2844884) immunohistochemistry analysis in formalin fixed and paraffin embedded human brain tissue followed by peroxidase conjugation of the secondary antibody and DAB staining. This data demonstrates the use of LRTM2 Antibody (C-term) for immunohistochemistry. Clinical relevance has not been evaluated.



Immunofluorescence

Image 2. Confocal immunofluorescent analysis of LRTM2 Antibody (C-term) (ABIN655297 and ABIN2844884) with HepG2 cell followed by Alexa Fluor 488-conjugated goat anti-rabbit IgG (green). Actin filaments have been labeled with Alexa Fluor 555 phalloidin (red). DAPI was used to stain the cell nuclear (blue).

Western Blotting

Image 3. LRTM2 Antibody (C-term) (ABIN655297 and ABIN2844884) western blot analysis in HepG2 cell line lysates (35 µg/lane). This demonstrates the LRTM2 antibody detected the LRTM2 protein (arrow).