

Datasheet for ABIN655306
anti-LRRC46 antibody (N-Term)[Go to Product page](#)

2 Images

Overview

Quantity:	400 µL
Target:	LRRC46
Binding Specificity:	AA 38-67, N-Term
Reactivity:	Human
Host:	Rabbit
Clonality:	Polyclonal
Conjugate:	This LRRC46 antibody is un-conjugated
Application:	Western Blotting (WB), Immunohistochemistry (Paraffin-embedded Sections) (IHC (p))

Product Details

Immunogen:	This LRRC46 antibody is generated from rabbits immunized with a KLH conjugated synthetic peptide between 38-67 amino acids from the N-terminal region of human LRRC46.
Clone:	RB29055
Isotype:	Ig Fraction
Purification:	This antibody is purified through a protein A column, followed by peptide affinity purification.

Target Details

Target:	LRRC46
Alternative Name:	LRRC46 (LRRC46 Products)
Molecular Weight:	35340

Target Details

Gene ID:	90506
NCBI Accession:	NP_219481
UniProt:	Q96FV0

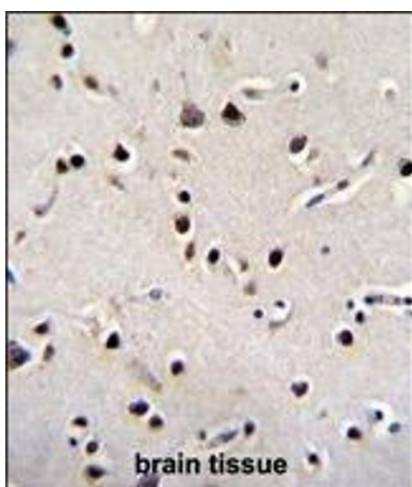
Application Details

Application Notes:	WB: 1:1000. IHC-P: 1:50~100
Restrictions:	For Research Use only

Handling

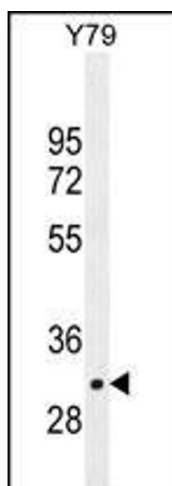
Format:	Liquid
Buffer:	Purified polyclonal antibody supplied in PBS with 0.09 % (W/V) sodium azide.
Preservative:	Sodium azide
Precaution of Use:	This product contains Sodium azide: a POISONOUS AND HAZARDOUS SUBSTANCE which should be handled by trained staff only.
Storage:	4 °C,-20 °C
Storage Comment:	Maintain refrigerated at 2-8 °C for up to 6 months. For long term storage store at -20 °C in small aliquots to prevent freeze-thaw cycles.
Expiry Date:	6 months

Images



Immunohistochemistry (Paraffin-embedded Sections)

Image 1. LRRC46 Antibody (N-term) (ABIN655306 and ABIN2844888) immunohistochemistry analysis in formalin fixed and paraffin embedded human brain tissue followed by peroxidase conjugation of the secondary antibody and DAB staining. This data demonstrates the use of LRRC46 Antibody (N-term) for immunohistochemistry. Clinical relevance has not been evaluated.



Western Blotting

Image 2. LRRC46 Antibody (N-term) (ABIN655306 and ABIN2844888) western blot analysis in Y79 cell line lysates (35 µg/lane). This demonstrates the LRRC46 antibody detected the LRRC46 protein (arrow).