



[Go to Product page](#)

Datasheet for ABIN655315
anti-LRRC45 antibody (C-Term)

4 Images

Overview

Quantity:	400 µL
Target:	LRRC45
Binding Specificity:	AA 615-643, C-Term
Reactivity:	Human
Host:	Rabbit
Clonality:	Polyclonal
Conjugate:	This LRRC45 antibody is un-conjugated
Application:	Western Blotting (WB), Flow Cytometry (FACS), Immunofluorescence (IF), Immunohistochemistry (Paraffin-embedded Sections) (IHC (p))

Product Details

Immunogen:	This LRRC45 antibody is generated from rabbits immunized with a KLH conjugated synthetic peptide between 615-643 amino acids from the C-terminal region of human LRRC45.
Clone:	RB29103
Isotype:	Ig Fraction
Purification:	This antibody is purified through a protein A column, followed by peptide affinity purification.

Target Details

Target:	LRRC45
Alternative Name:	LRRC45 (LRRC45 Products)

Target Details

Molecular Weight:	75951
Gene ID:	201255
NCBI Accession:	NP_659436
UniProt:	Q96CN5

Application Details

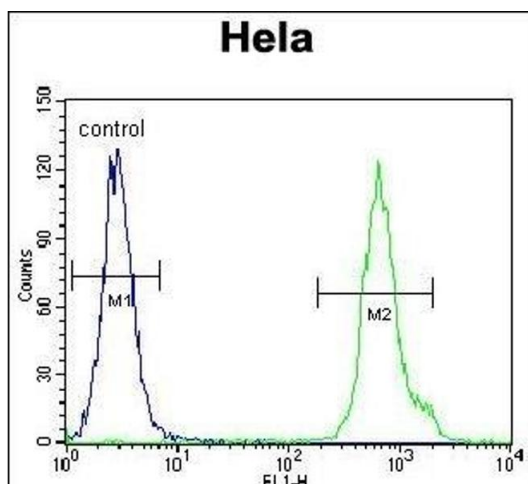
Application Notes: IF: 1:25. WB: 1:1000. IHC-P: 1:50~100. FC: 1:10~50

Restrictions: For Research Use only

Handling

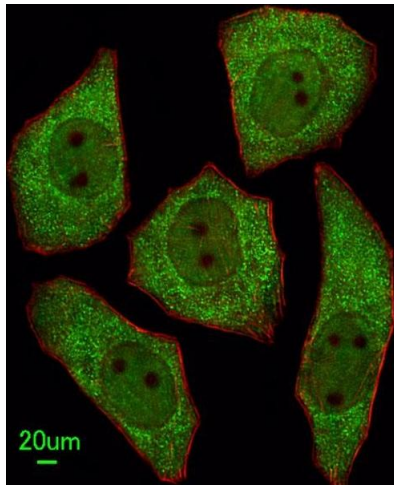
Format:	Liquid
Buffer:	Purified polyclonal antibody supplied in PBS with 0.09 % (W/V) sodium azide.
Preservative:	Sodium azide
Precaution of Use:	This product contains Sodium azide: a POISONOUS AND HAZARDOUS SUBSTANCE which should be handled by trained staff only.
Storage:	4 °C,-20 °C
Storage Comment:	Maintain refrigerated at 2-8 °C for up to 6 months. For long term storage store at -20 °C in small aliquots to prevent freeze-thaw cycles.
Expiry Date:	6 months

Images



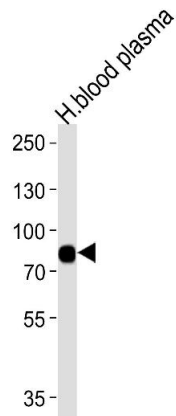
Flow Cytometry

Image 1. LRRC45 Antibody (C-term) (ABIN655315 and ABIN2844894) flow cytometric analysis of HeLa cells (right histogram) compared to a negative control cell (left histogram). FITC-conjugated goat-anti-rabbit secondary antibodies were used for the analysis.



Immunofluorescence

Image 2. Immunofluorescent analysis of cells, using LRRC45 Antibody (C-term) (ABIN655315 and ABIN2844894). (ABIN655315 and ABIN2844894) was diluted at 1:25 dilution. Alexa Fluor 488-conjugated goat anti-rabbit IgG at 1:400 dilution was used as the secondary antibody (green). Cytoplasmic actin was counterstained with Dylight Fluor® 554 (red) conjugated Phalloidin (red).



Western Blotting

Image 3. Western blot analysis of lysates from human blood plasma tissue (from left to right), using LRRC45 Antibody (C-term) (ABIN655315 and ABIN2844894). (ABIN655315 and ABIN2844894) was diluted at 1:1000 at each lane. A goat anti-rabbit IgG H&L(HRP) at 1:5000 dilution was used as the secondary antibody. Lysates at 35 μ g per lane.

Please check the [product details page](#) for more images. Overall 4 images are available for ABIN655315.