

Datasheet for ABIN655319  
**anti-MBTD1 antibody (C-Term)**

## 3 Images

[Go to Product page](#)

## Overview

Quantity:	400 µL
Target:	MBTD1
Binding Specificity:	AA 564-592, C-Term
Reactivity:	Human, Mouse
Host:	Rabbit
Clonality:	Polyclonal
Conjugate:	This MBTD1 antibody is un-conjugated
Application:	Western Blotting (WB), Immunohistochemistry (Paraffin-embedded Sections) (IHC (p))

## Product Details

Immunogen:	This MBTD1 antibody is generated from rabbits immunized with a KLH conjugated synthetic peptide between 564-592 amino acids from the C-terminal region of human MBTD1.
Clone:	RB29115
Isotype:	Ig Fraction
Purification:	This antibody is purified through a protein A column, followed by peptide affinity purification.

## Target Details

Target:	MBTD1
Alternative Name:	MBTD1 ( <a href="#">MBTD1 Products</a> )
Background:	Putative Polycomb group (PcG) protein. PcG proteins maintain the transcriptionally repressive

## Target Details

state of genes, probably via a modification of chromatin, rendering it heritably changed in its expressibility (By similarity). Specifically binds to monomethylated and dimethylated 'Lys-20' on histone H4.

Molecular Weight: 70547

Gene ID: 54799

NCBI Accession: [NP\\_060113](#)

UniProt: [Q05BQ5](#)

## Application Details

Application Notes: WB: 1:1000. WB: 1:1000. IHC-P: 1:50~100

Restrictions: For Research Use only

## Handling

Format: Liquid

Buffer: Purified polyclonal antibody supplied in PBS with 0.09 % (W/V) sodium azide.

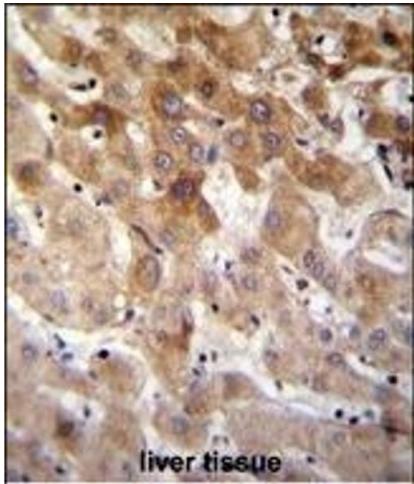
Preservative: Sodium azide

Precaution of Use: This product contains Sodium azide: a POISONOUS AND HAZARDOUS SUBSTANCE which should be handled by trained staff only.

Storage: 4 °C, -20 °C

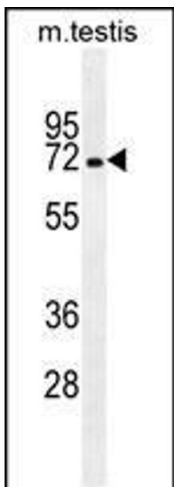
Storage Comment: Maintain refrigerated at 2-8 °C for up to 6 months. For long term storage store at -20 °C in small aliquots to prevent freeze-thaw cycles.

Expiry Date: 6 months



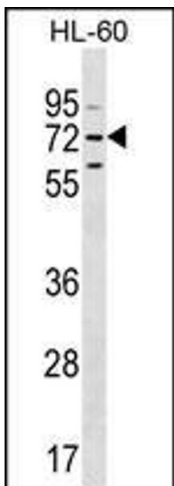
**Immunohistochemistry (Paraffin-embedded Sections)**

**Image 1.** MBTD1 Antibody (C-term) (ABIN655319 and ABIN2844896) immunohistochemistry analysis in formalin fixed and paraffin embedded human liver tissue followed by peroxidase conjugation of the secondary antibody and DAB staining. This data demonstrates the use of MBTD1 Antibody (C-term) for immunohistochemistry. Clinical relevance has not been evaluated.



**Western Blotting**

**Image 2.** MBTD1 Antibody (C-term) (ABIN655319 and ABIN2844896) western blot analysis in mouse testis tissue lysates (35 µg/lane). This demonstrates the MBTD1 antibody detected the MBTD1 protein (arrow).



**Western Blotting**

**Image 3.** MBTD1 Antibody (C-term) (ABIN655319 and ABIN2844896) western blot analysis in HL-60 cell line lysates (35 µg/lane). This demonstrates the MBTD1 antibody detected the MBTD1 protein (arrow).