



[Go to Product page](#)

Datasheet for ABIN655332

## anti-PNLDC1 antibody (C-Term)

### 3 Images

#### Overview

Quantity:	400 µL
Target:	PNLDC1
Binding Specificity:	AA 449-478, C-Term
Reactivity:	Human
Host:	Rabbit
Clonality:	Polyclonal
Conjugate:	This PNLDC1 antibody is un-conjugated
Application:	Western Blotting (WB), Flow Cytometry (FACS), Immunohistochemistry (Paraffin-embedded Sections) (IHC (p))

#### Product Details

Immunogen:	This PNLDC1 antibody is generated from rabbits immunized with a KLH conjugated synthetic peptide between 449-478 amino acids from the C-terminal region of human PNLDC1.
Clone:	RB29269
Isotype:	Ig Fraction
Purification:	This antibody is purified through a protein A column, followed by peptide affinity purification.

#### Target Details

Target:	PNLDC1
Alternative Name:	PNLDC1 ( <a href="#">PNLDC1 Products</a> )

## Target Details

Molecular Weight:	60124
Gene ID:	154197
NCBI Accession:	<a href="#">NP_001258791</a> , <a href="#">NP_775787</a>
UniProt:	<a href="#">Q8NA58</a>

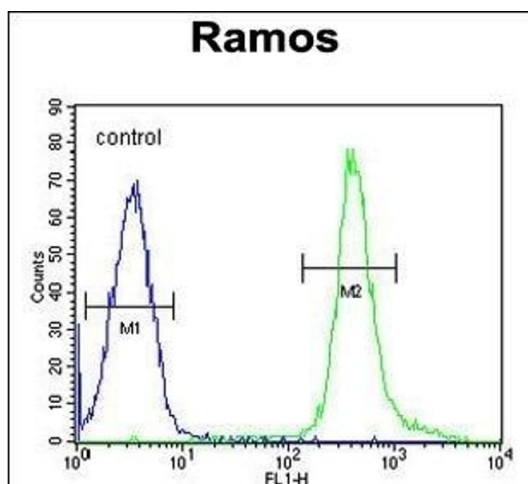
## Application Details

Application Notes:	WB: 1:1000. IHC-P: 1:10~50. FC: 1:10~50
Restrictions:	For Research Use only

## Handling

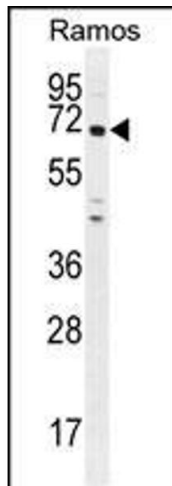
Format:	Liquid
Buffer:	Purified polyclonal antibody supplied in PBS with 0.09 % (W/V) sodium azide.
Preservative:	Sodium azide
Precaution of Use:	This product contains Sodium azide: a POISONOUS AND HAZARDOUS SUBSTANCE which should be handled by trained staff only.
Storage:	4 °C, -20 °C
Storage Comment:	Maintain refrigerated at 2-8 °C for up to 6 months. For long term storage store at -20 °C in small aliquots to prevent freeze-thaw cycles.
Expiry Date:	6 months

## Images



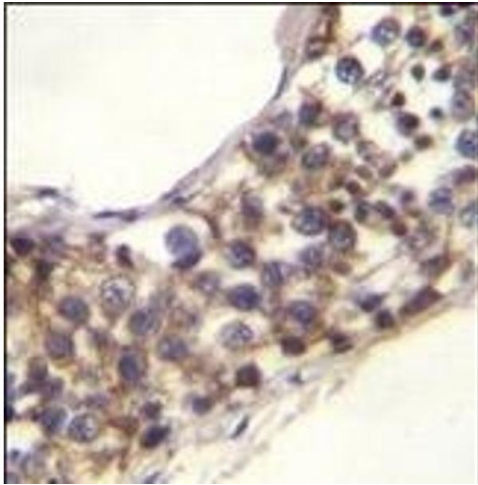
### Flow Cytometry

**Image 1.** PNLDC1 Antibody (C-term) (ABIN655332 and ABIN2844899) flow cytometric analysis of Ramos cells (right histogram) compared to a negative control cell (left histogram). FITC-conjugated goat-anti-rabbit secondary antibodies were used for the analysis.



### Western Blotting

**Image 2.** PNLDC1 Antibody (C-term) (ABIN655332 and ABIN2844899) western blot analysis in Ramos cell line lysates (35 µg/lane). This demonstrates the PNLDC1 antibody detected the PNLDC1 protein (arrow).



### Immunohistochemistry (Paraffin-embedded Sections)

**Image 3.** PNLDC1 Antibody (C-term) (ABIN655332 and ABIN2844899) immunohistochemistry analysis in formalin fixed and paraffin embedded human testis tissue followed by peroxidase conjugation of the secondary antibody and DAB staining. This data demonstrates the use of PNLDC1 Antibody (C-term) for immunohistochemistry. Clinical relevance has not been evaluated.