



[Go to Product page](#)

Datasheet for ABIN655333
anti-PRR22 antibody (C-Term)

3 Images

Overview

Quantity:	400 µL
Target:	PRR22
Binding Specificity:	AA 368-397, C-Term
Reactivity:	Human
Host:	Rabbit
Clonality:	Polyclonal
Conjugate:	This PRR22 antibody is un-conjugated
Application:	Western Blotting (WB), Flow Cytometry (FACS), Immunohistochemistry (Paraffin-embedded Sections) (IHC (p))

Product Details

Immunogen:	This MGC24975 antibody is generated from rabbits immunized with a KLH conjugated synthetic peptide between 368-397 amino acids from the C-terminal region of human MGC24975.
Clone:	RB29284
Isotype:	Ig Fraction
Purification:	This antibody is purified through a protein A column, followed by peptide affinity purification.

Target Details

Target:	PRR22
Alternative Name:	MGC24975 (PRR22 Products)

Target Details

Molecular Weight:	43980
Gene ID:	163154
NCBI Accession:	NP_001127788
UniProt:	Q8IZ63

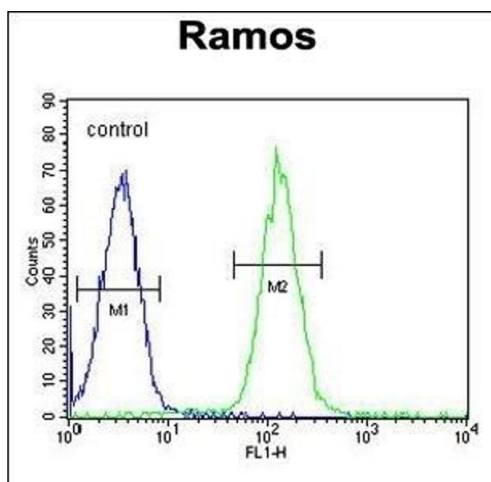
Application Details

Application Notes:	WB: 1:1000. IHC-P: 1:50~100. FC: 1:10~50
Restrictions:	For Research Use only

Handling

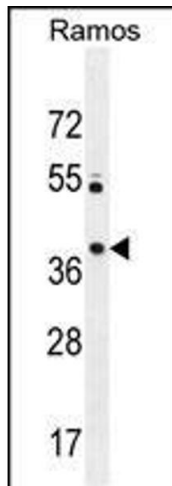
Format:	Liquid
Buffer:	Purified polyclonal antibody supplied in PBS with 0.09 % (W/V) sodium azide.
Preservative:	Sodium azide
Precaution of Use:	This product contains Sodium azide: a POISONOUS AND HAZARDOUS SUBSTANCE which should be handled by trained staff only.
Storage:	4 °C,-20 °C
Storage Comment:	Maintain refrigerated at 2-8 °C for up to 6 months. For long term storage store at -20 °C in small aliquots to prevent freeze-thaw cycles.
Expiry Date:	6 months

Images



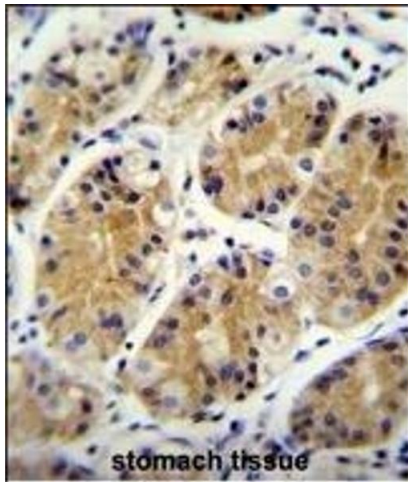
Flow Cytometry

Image 1. MG Antibody (C-term) (ABIN655333 and ABIN2844900) flow cytometric analysis of Ramos cells (right histogram) compared to a negative control cell (left histogram). FITC-conjugated goat-anti-rabbit secondary antibodies were used for the analysis.



Western Blotting

Image 2. MG Antibody (C-term) (ABIN655333 and ABIN2844900) western blot analysis in Ramos cell line lysates (35 µg/lane). This demonstrates the MG antibody detected the MG protein (arrow).



Immunohistochemistry (Paraffin-embedded Sections)

Image 3. MG Antibody (C-term) (ABIN655333 and ABIN2844900) immunohistochemistry analysis in formalin fixed and paraffin embedded human stomach tissue followed by peroxidase conjugation of the secondary antibody and DAB staining. This data demonstrates the use of MG Antibody (C-term) for immunohistochemistry. Clinical relevance has not been evaluated.